

Exploring History Together

As we make our way through a challenging year it is refreshing to look back on the work and achievements of 2019 and present it to the Oberlin Heritage Center's members and supporters. Long-time readers may notice that this year's report is condensed, which reflects ongoing efforts to adapt and prioritize work focused on preserving and sharing local history. Last year was packed with programs and accomplishments and it was difficult to pare things down, but we hope you enjoy the streamlined format and we would love to hear from you.

In 2019, there were countless ways residents and visitors, youth and adults, engaged with history and the community. Three OHC events featured musical performers. Over fifty adults attended field trips to Oberlin College's new theatre space and the global horticultural provider AgriNomix, based right here in Oberlin (pictured). Staff and volunteers talked with over 2,400 youth through tours and education programs, a highlight being the return of archaeologist George Wingard from South Carolina to teach kids how to piece together a story from artifacts and give Oberlin students first-hand experience with an incredibly rare jar made by enslaved potter David Drake (pictured).

Groups coming for guided tours included elementary students, educators seeking professional development, college classes, visiting scholars, reuniting families, and more.



Oberlin students appreciated the opportunity to directly touch history.



In July 2019 OHC toured AgriNomix, North America's largest supplier of automation products to the horticulture industry.



Musician MikelParis visited the Oberlin Heritage Center to record an original song on the 200 year old square piano and produce a mini video as part of his TuneTrek series.



When Sherry Suttles was hired as the City Manager of Oberlin she became the first African American woman to serve in this position in the nation. She reconnected with many friends and former colleagues when she came back to film interviews for a future documentary.

We were delighted to take part in several special projects, including a visit by musician MikelParis, who was travelling the country to blend music with historic sites (pictured).

OHC staff also helped former City Manager Sherry Suttles with a documentary film project (pictured with former Oberlin police chief Robert "BJ" Jones). We were excited to host Ken Turino, Manager of Community Partnerships and Resource Development at Historic New England, as part of a grant-funded project to help OHC evaluate its tour offerings and impact.

Continued on page 2

THE MISSION OF THE OBERLIN HERITAGE CENTER IS TO PRESERVE AND SHARE OBERLIN'S UNIQUE HERITAGE AND TO MAKE OUR COMMUNITY A BETTER PLACE TO LIVE, LEARN, WORK AND VISIT.



Oberlin Heritage Center Gazette

Annual Report for 2019

July 2020

Vol. XXVIII

Editors: Veronica Vanden Bout
and Liz Schultz

Other contributor: Bethany
Hobbs

Photographers: Brittnei
Sherrod, Betty Morris; OHC
staff, interns, & volunteers

Layout: Ricki C. Herdendorf,
EcoSphere Associates



Exploring History Together

Continued from page 1

One of the most significant moments of 2019 was the retirement of Mary Anne Cunningham, who was hired as Assistant to the Director in 1993 and served OHC for over 25 years with informative and inspirational communications, a creative touch, eagle-eye for detail, and a passion for the mission of OHC. Honorary Trustees Marianne Cochrane and Cathe Radabaugh were two of the hundreds of people who thanked Mary Anne for her service and wished her a fulfilling retirement (pictured).

As always, the teamwork of so many volunteers, members, sponsors, collaborators, and friends is what made the work of the Heritage Center possible. *Thank you all!*

Annual Meeting program “Elusive Utopia” provides thought-provoking topic

At the Oberlin Heritage Center’s Annual Meeting on Tuesday, April 2, 2019, participants were treated to a presentation by Gary J. Kornblith and Carol Lasser on their new book, *Elusive Utopia*. The professors are scholars whose teachings, research, and collaborations have positively shaped Oberlin College and the community for over thirty years. Carol earned a Bachelor of Arts in history from the University of Pennsylvania and a Master’s and Doctorate in History from Harvard University. She was a Professor of History at Oberlin College from 1980 to 2016. Gary earned a Bachelor of Arts from Amherst College and Master’s and Doctorate degrees from Princeton University. He was a Professor of History at Oberlin College from 1981 until 2012. Their courses motivated thousands of students to ask the difficult questions, go directly to the source, understand individuals and events within context, and find the untold stories.

Gary and Carol stand apart for their tireless commitment to community history. Carol’s long-standing class “Oberlin History as American History” fostered in her college students a passion and appreciation for local history, while in the high

school students it fueled a curiosity and awakened sense of community. Gary was and continues to be a leader in making both history and the internet accessible to everyone in the community. And not only do they both want to share



Oberlin College professors emeriti Gary Kornblith and Carol Lasser were the keynote speakers during the Annual Meeting, highlighting content from their new book “Elusive Utopia: The Struggle for Racial Equality in Oberlin, Ohio.”

the histories they are passionate about, they work with and encourage countless and diverse members of the community to research and share their own histories. Despite Gary and Carol retiring from the college in 2012 and 2016, respectively, their work goes on, as does their impact in the community.

Annual Meeting attendees heard about their effort to research and present a truer history of race and inequality in Oberlin in their new book.

Elusive Utopia: Before the Civil War, Oberlin, Ohio, stood in the vanguard of the abolition and black freedom movements. The community, including co-founded Oberlin College, strove to end slavery and establish full equality for all. Yet, in the half-century after the Union victory, Oberlin's resolute stand for racial justice eroded as race-based discrimination pressed down on its African American citizens. In *Elusive Utopia*, authors Gary J. Kornblith and Carol Lasser tell the story of how Oberlin residents, in the nineteenth and early twentieth centuries, black and white, understood and acted upon their changing perceptions of race, ultimately resulting in the imposition of a color line.

The business meeting included remarks by Board President Gail Wood reporting a celebratory update on the Pat Murphy Endowment for Heritage Preservation, which had reached \$551,559.58 in gifts and had a market value of almost \$590,000.

New trustees taking their seats on the OHC board of trustees in 2019 were: Julie Min, Carl Jacobson, and Nikki Smith-Hignite.

Carl Jacobson

Carl is a familiar figure to many people at the Oberlin Heritage Center as well as the community. Carl was the director of the Oberlin Shansi Memorial Association for over 30 years,

coordinating their educational exchange program. Carl joined the Oberlin Heritage Center's docent team a little over three years ago and quickly began leading history walks and tours of the Oberlin Heritage Center's three buildings. Carl's knowledge, friendliness, skills as a storyteller, and curiosity make him a wonderful ambassador of Oberlin.

Julie Min

Julie is an independent project manager and exhibit developer with degrees in mechanical engineering, industrial design, and American studies. In 2018, she worked with the Oberlin College history department to bring the nationally-travelling Courage and Compassion exhibit to Oberlin. The exhibit focused on the Japanese American experience during World War II, including community efforts to combat internment and racism. The Oberlin Heritage Center collaborated with that team to plan and lead tours of the exhibit for area school students.

Nikki Smith-Hignite

An Ohio native, Nikki settled in Oberlin in 2012, drawn to the town's culture and history. She embarked on a rescue mission for a century home, originally built by the Watson family in the late 1800s. Currently, Nikki works at Ross Environmental in Elyria as an Information Technology Project Manager. Nikki's interest include historic preservation and restoration, carpentry, and enjoying the local parks with her wife, daughter, and Bernese Mountain dog.

The 18th Annual Community Awards were given to individuals who are making a difference in particular areas of interest. These citizens are recognized for their investment and interest in our local area.

18th Annual OHC Community Award Recipient Profiles

History Teacher of the Year Award: Mike Demchak

Nominated by Mary Manning, Region 3 Ohio History Day Coordinator, Cleveland History Center

As a Social Studies teacher at Christian Community School in North Eaton, Ohio, Mike Demchak was well-aware of the relevance of delving into the past to enhance our ability to interact with the world we live in today. His experience as a high school history teacher led him to embrace the History Day program as a formidable tool for students to learn not only research and argumentative skills, but also to deepen their understanding of the value found in critical thinking, teamwork, goal-setting, patience and responsibility. For more than a decade



OHC honored many Community Award recipients at the Annual Meeting, including (left to right): Rich Fredrickson, Mike Demchak, Judy Connolly, Adam Freas, Ruby Denneen, John Elrod, Marty Buck (not pictured: Camille Hamlin Allen, Amy Chuang, Judy Cook).

Continued on page 4

Annual Meeting

Continued from page 3

Mike built his school's History Day program into a true powerhouse – the CCS program demonstrates consistent success in Cleveland's regional contest as well as at state and national levels of competition. His mentorship helped mold students who are well-prepared, thoughtful, and capable of growing stronger through constructive criticism, qualities that will serve them well into adulthood.

Business Leader Service Award: TECHIES / Marty Buck
Nominated by Bethany Hobbs, OHC Business Manager

For the previous 15 years, Techies owner-operator Martin Buck singlehandedly served as the Oberlin Heritage Center's IT Department, and although a subcontractor on paper (with a nominal paid contract), he was a volunteer at heart. He handled numerous planned projects for OHC including researching and recommending purchases to fit a tight nonprofit budget, installing new equipment and software, networking computers, copiers, scanners and more to "talk" to one another, backing up records, and much more. Marty came in at a moment's notice to solve emergency server issues or recover errant batches of e-mails. No matter the question or the problem, he handled all IT calls with finesse and without fuss.

In addition to his service to the Oberlin Heritage Center, Marty's skills and generosity were valued by several others in the community, including his work with The First Church in Oberlin, U.C.C. and The Friends of the Oberlin Public Library. As Marty retired from his service to the Oberlin Heritage Center, this award expressed our gratitude and recognition for all the extra time and talent he shared with this nonprofit organization.

OHC Volunteers of the Year: The Westwood Cemetery GPS Team

Nominated by Liz Schultz, OHC Executive Director

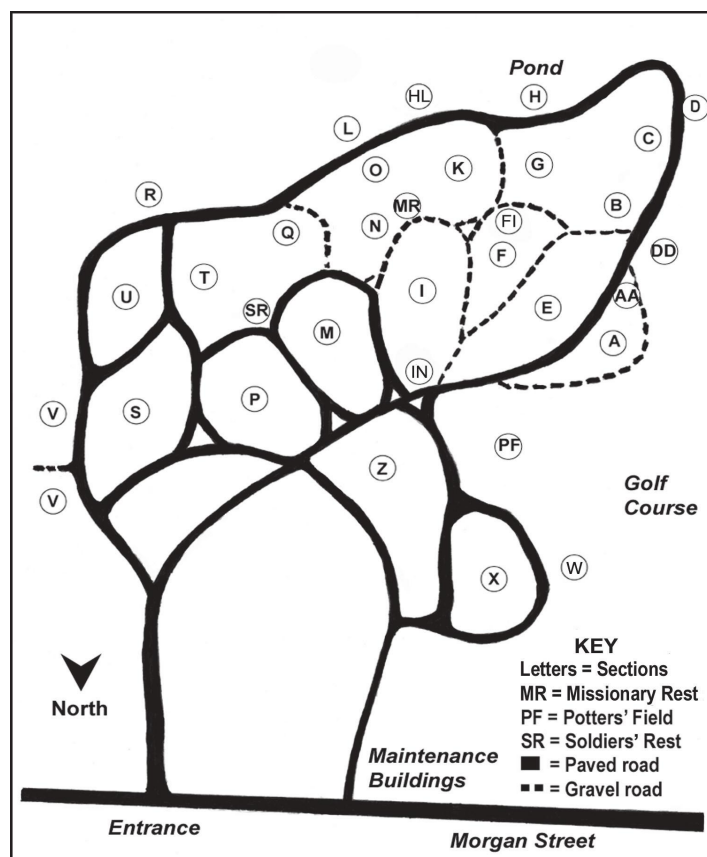
Historic Westwood Cemetery in Oberlin (pictured) was dedicated in 1864 and contains thousands of monuments, headstones and markers. For the past ten years, volunteers from the Oberlin Heritage Center have been documenting the gravestones by transcribing inscriptions, taking photographs and most recently, determining GPS coordinates to make it easier for visitors to locate each individual gravesite (pictured).

The GPS phase of the project began in 2014 with the help of then Board member **Rich Fredrickson** and his surveying and engineering company **Rafter A. LTD.** A volunteer pair worked nearly every weekend from March through October for four years, and Rich was *always* one of that pair. Meanwhile, **Judy Connolly** has been the master database keeper through all phases of the Westwood work. She types in names, dates, dimensions, compositions, conditions,

special comments, and also adds a photograph for each entry in the database (now totaling over 11,000 records). Other GPS team members include **Camille Hamlin Allen**, **Amy Chuang**, **Judy Cook** (now also helping with database entry), and **Adam Freas**, along with OHC staff members **Amanda Manahan** and **Liz Schultz**.



In 2018 alone, the team logged 172 volunteer hours in the field and 360 hours working on the data. Multiply that by the four years getting to this point, and this team dedicated over 2,000 hours to the GPS collection project. Check out the database at <http://www.oberlinwestwood.org/omeka/> to marvel and appreciate the good work of these tireless volunteers.



Youth Community Service Award: Ruby Denneen

Nominated by Amanda Manahan, OHC Museum Education & Tour Coordinator

It was a lucky day for the Heritage Center when Ruby Denneen inquired about volunteering for the organization in the summer of 2017. A rising high school junior at the time, Ruby already juggled a heavy academic schedule with a busy extracurricular

calendar that included involvement in high school drama productions and community theater. Yet she dedicated two hours almost every Saturday to the Heritage Center and stood out for her willingness to do whatever was needed and to do it with the care and attention to detail that were her trademark strengths. She contributed a significant amount of research in the preparation of Spring Break Camp 2018 and helped with program evaluation and publicity distribution. The Heritage Center was been enriched by Ruby's passion for community service, her positive attitude and "can do" spirit.

**Youth Community Service Award:
John Elrod**

Nominated by Amanda Manahan,
OHC Museum Education & Tour
Coordinator

Since becoming involved at the Oberlin Heritage Center as a high school sophomore in the spring of 2017, John matured from a quiet yet highly capable student into an eager and confident volunteer. His research skills, his artistic nature, and his quick ability to learn new things made him a valued assistant in many areas of museum work, including history education and programming, leading tours and assisting at kids camps, and designing publicity materials. He even was the "voice" of OHC on a series of public service announcements recorded by WOBL/WDLW, which were played over the airwaves. John has been a dedicated and engaging youth ambassador for the Heritage Center.



Pictured here are talented past and present AmeriCorps / Ohio History Service Corps members of OHC who could attend the Annual Meeting. Pictured left to right: Riley Thomas, Mary Manning, Kaitlyn Donaldson, Jen Graham.

2019 By the Numbers!

As of the end of 2019, OHC had:

Shared history with over 4,300 program & event participants

Answered 119 research and information requests

Given tours to over 2,000 people

Shared history with 1,795 Facebook & Instagram followers

Accessioned 57 items and records into the permanent collection

Partnered with over 20 community organizations to offer specialized programs & services

Provided online information in over 23,000 website sessions



OHC staff members, left to right: Bethany Hobbs, Amanda Manahan, Mary Anne Cunningham, Liz Schultz, Mary Worthington, Maren McKee, Riley Thomas.

Financial Report

On page 7 you will find a summary of the Oberlin Heritage Center's unaudited financials for fiscal year 2019. An audited report of OHC's Statement of Activities, Statement of Financial Position, and Functional Expenses for 2019 prepared by Barnes Wendling CPAs will be available on OHC's website. Prior year audits for the Oberlin Heritage Center and its two wholly owned subsidiaries, OHC Properties, Inc., (a property holding agency for 81 S. Professor Street) and Vineway, LLC (a commercial rental property at 82-86 South Main Street) and IRS Form 990s for OHC can also be found on the website.

Contributions, through OHC's annual fund campaign and other donations, plus membership brought in over \$100,000 of support to the Oberlin Heritage Center's operational budget. Grants from The Nord Family Foundation and

Carol Lasser & Gary Kornblith funded the resurfacing of the path that leads to the Little Red Schoolhouse. Additional grants from the Community Foundation of Lorain County and Nordson Corporation allowed us to hire interns vital to our summer operations of tours, children camps, and participation in community events. A list of all grants and special project support awarded to OHC in 2019 can be found on page 7. Revenue from endowments held by OHC (managed by Meadowbrook Investments) and the Community Foundation funds staff support, preservation of buildings and collections, and general operations.

In addition to the schoolhouse path, work was completed on the Monroe House back porch and LED lighting was installed in the Monroe House basement. This will save the Heritage Center on its monthly electric bills plus protect the collections from damaging UV rays. While personnel and payroll expenses make up most of our annual expenses, the number does not reflect how personnel expenses translate directly into the preservation of collections, implementation of tour and outreach programs, connecting to our donors and members through mailings and eGazettes, and training our interns, docents, & volunteers. The Oberlin Heritage Center staff works daily to manage funds wisely and within budget.

Lastly, 2019 saw transition as former Board Treasurer Ed Wardwell finished his term with the OHC board and we welcomed Laurel Price Jones as our new Board Treasurer. She, along with the Finance Committee, helped to provide insight and guidance throughout the year for OHC's continued sustainability.

Prepared by Bethany Hobbs, Business Manager

MATCHING GIFTS SPONSORS

**IBM Corporation
Matching Grants Program**

**The Nord Family
Foundation**

**Raytheon Company Matching Grant
Program**

Internships, Training Programs, and Professional Development Support

AmeriCorps

with support from The Nord Family
Foundation and the Ohio History Service
Corps/Ohio History Connection

**Community Foundation of
Lorain County**

Nordson Corporation

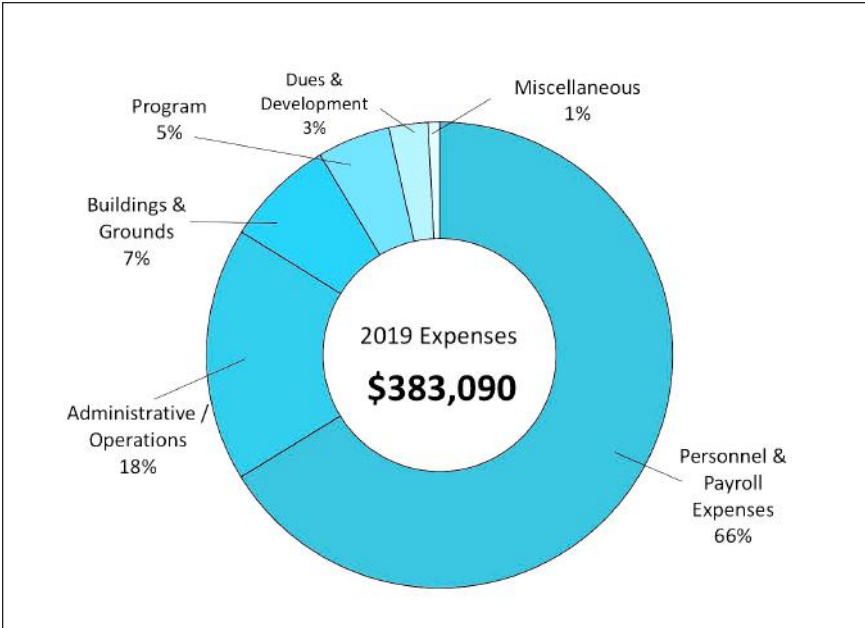
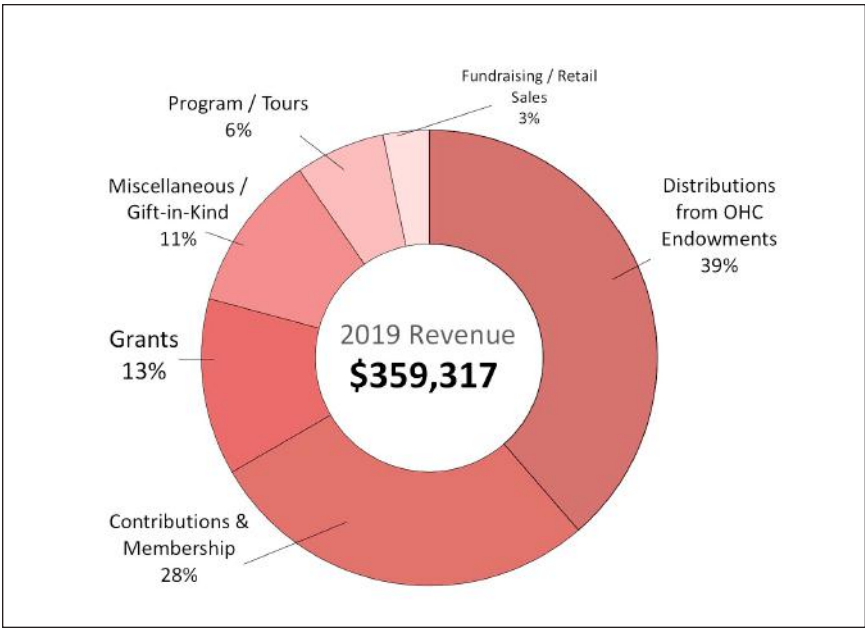
**Oberlin College Bonner Center for
Community-Engaged Learning,
Teaching and Research**

**Oberlin College Community-Based
Work Study Program**

Vantage Aging



*Ken Turino, co-editor of a new book **Reimagining Historic House Museums: New Approaches and Proven Solutions** (Fall 2019), spent two days in Oberlin talking with OHC staff, board members and docents to assess and discuss practical options for engaging visitors in new ways. Turino's visit was part of Museum Education & Tour Coordinator Amanda Manahan's grant-funded work in **Benchmarking Best Practices for Self-Guided Tours in Historic House Museums** funded in part by the Ohio History Fund and Ohio Humanities, a state affiliate of the National Endowment for the Humanities.*



Grants and Special Project Support

Community Foundation of Lorain County

Jane and Eric Nord Fund
General operating support

Edward W. & Gail F. Hubbard
Hubbard History Day Prize

David and Eleanor Ignat
Special projects and general operating support

Carol Lasser and Gary Kornblith
Little Red Schoolhouse path resurfacing

Anne V. Martin
Educational outreach laptop

The Nord Family Foundation
Little Red Schoolhouse path resurfacing

Nordson Corporation
Educational Programs support

Oberlin Schools Endowment Fund
Archaeology Classroom programs

Oberlin Business Partnership / City of Oberlin / Bed Tax Grant
Promotional photos, postcard, social media advertising

Ohio History Fund
Self-guided tours benchmarking project

Ohio Humanities
Self-guided tours benchmarking project

Tom & Mary Kirtz Van Nortwick
Children's programming

Ed and Anne Wardwell
Collections Manager support



Thanks to a grant from The Nord Family Foundation, OHC was able to hire Locke's GoGreen to resurface the pea gravel path to the 1836 Little Red Schoolhouse.



OHC received a grant from the Ohio History Fund on Statehood day to fund a study of self-guided tours.

Who's Who at the Oberlin Heritage Center in 2019

BOARD OF TRUSTEES

Gail Wood, President
 Ken Grossi, 1st Vice President
 Eboni Johnson, 2nd Vice President
 Barbara Enos, Secretary
 Laurel Price Jones, Treasurer

Erik Breunig (resigned June 2019)
 Amy Chuang
 Judy Cook
 Kaitlyn Donaldson
 Carl Jacobson
 Stephen Johnson III, 2nd Vice President
 (term ended April 2019)
 Claudia W. Jones
 Rebecca Lahetta (resigned October 2019)
 Marlene Merrill
 Julie Min
 Brittnei Sherrod
 Laura Slocum (resigned June 2019)
 Nichol Smith-Hignite
 Edward J. Wardwell, Treasurer (term ended
 April 2019)
 Annessa Wyman

Honorary Trustees

Camille Hamlin Allen
 Michele Andrews
 Roland Baumann
 Richard Baznik
 Sigrid Boe
 Howard Broadwell
 Scott Broadwell
 Robert B. Calhoun
 Marianne Cochrane
 Fran Cooper
 Walter Edling
 Adam Freas
 Rich Fredrickson
 Roberta Garcia
 Bradley A. Hayes
 Richard Holsworth
 Stephen Johnson III
 Nicholas R. Jones
 Carol Lasser
 Bert Latran, Jr.
 Ann Livingston
 Elisabeth M. Mahjoub
 W. Jeanne McKibben
 David W. Mellott
 Cathe Radabaugh
 Dina Schoonmaker
 Shirley Shubert
 Donna Marie Shurr
 Eugene Foggo Simon
 Thelma Quinn Smith
 James R. Underwood
 Mary Kirtz Van Nortwick
 Eugenia Poporad Vanek
 Edward J. Wardwell

BOARD PRESIDENTS PAST AND PRESENT

Oberlin Improvement Society (later renamed Oberlin Village Improvement Society/OVIS)

1903 - 1959 Presidents included:

J.F. Randolph
 Giles Waldo Shurtleff
 Adelia Field Johnston
 W.F. Bohn
 Helen White Martin
 Louis E. Lord
 Paul B. Sears
 Ira L. Porter

Oberlin Historical Society

1960 - Cliff A. Barden
 1961-1964 - Donald M. Love

Oberlin Historical and Improvement Organization/Oberlin Heritage Center

1964-1967 - Frank C. Van Cleef
 1967-1969 - John A. Cochrane
 1969-1972 - Raymond A. Campbell
 1975-1983 - Stephen Johnson, Jr.
 1985-1990 - Robert D. Jenkins
 1990-1998 - Marianne Cochrane
 1998-2001 - Patricia Holsworth
 2001-2003 - Roberta Garcia
 2003-2005 - Cathe Radabaugh
 2005-2010 - James W. White
 2010-2014 - Walter Edling
 2014-2016 - Nicholas R. Jones
 2016-Present - Gail Wood



Steve Johnson and Ed Wardwell were named honorary trustees at the Annual Meeting, after years of service to the organization.



OHC board of trustees at the 2019 Annual Meeting, left to right: Marly Merrill, Carl Jacobson, Julie Min, Ken Grossi, Laurel Price Jones, Kaitlyn Donaldson, Gail Wood, Claudia Jones, Laura Slocum, Barb Enos, Eboni Johnson, Nikki Smith-Hignite, Brittnei Sherrod (not pictured: Eric Breunig, Amy Chuang, Judy Cook, Becky Lahetta, Annessa Wyman).

Who's Who at the Oberlin Heritage Center in 2019

STAFF MEMBERS

Elizabeth Schultz, Executive Director
 Mary Anne Cunningham, Assistant to the Director+
 Bethany Hobbs, Business Manager+
 Amanda Manahan, Museum Education & Tour Coordinator
 Maren McKee, Collections Manager+
 Mary Worthington, Museum Housekeeper+
 Julie Hill, Office Assistant and Greeter+
 "+ " = Part-time staff member

Ohio History Service Corps/ AmeriCorps Member

Riley Thomas (term began October 2018)
 Katrina Walker (term began October 2019)

Staff Provided by Vantage Aging

Bob Williams

Student Interns (from Oberlin College except as noted)

Malachi Clemons, Bonner Scholar
 Maya Colman (Winter)
 Julia Cooke (OC student volunteer)
 Lauryn Countess (Spring)
 Colby Fortin (Spring & Fall)
 Ruby Denneen (Summer)
 Jennifer Galagher (Summer)
 Olive Hwang (Winter)
 Cecilia Longo (OC student volunteer)
 Logan McDermott-Mostowy (Spring & Fall)
 Wesley Patterson (Spring, Fall, & Summer) (also a Bonner Scholar)
 Sydney Murphy (Fall)

Joshua Rhodes (Spring & Fall) (also a Bonner Scholar)
 Cady Stoloski (Winter)
 Soleil Torres (Spring), Bonner Scholar

Board Committee Chairpersons

Executive – Gail Wood
 Development – Gail Wood
 Finance – Edward J. Wardwell; Laurel Price Jones
 Governance – Barb Enos
 Strategic Planning – Claudia Jones

Special Interest Group Chairpersons

B&B – Gail Wood and Barb Enos
 Collections – Maren McKee, staff liaison
 Docents – Amanda Manahan, staff liaison
 Oral History – Liz Schultz, staff liaison
 Westwood Inventory Project – Camille Hamlin Allen

Vineway, LLC, Board of Managers

President – Scott Broadwell
 Secretary – Michael Reynolds
 Board Members – Erik Breunig, Adam Freas, Jeff Hobbs, Kristin Peterson

Vineway, LLC, Property Manager

Mike Galbreath, National Business Brokers

OHC Properties, Inc., Board of Directors

President – Rich Fredrickson
 Vice-President – Terry Hobbs

Secretary – Sarah Colson
 Treasurer – Cathie Radabaugh
 Board Members – Craig Enos, Ann Livingston, Jerry Anderson
 OHC Board Liaison – Rebecca Lahetta

OHC Properties, Inc., Property Manager

Jeff McConeghy (Jan – June)
 Michele Andrews (June – Dec)



Collections Manager Maren McKee (left) and Ohio History Service Corps member Katrina Walker measured rugs to prepare for a carpet padding replacement project.



Impromptu staff, intern, volunteer photo, pictured left to right: Mary Worthington, Katrina Walker, Amanda Manahan, Linda Gates, Jean Simon, Julie Hill, Mary Anne Cunningham, Maren McKee, Bethany Hobbs, Joshua Rhodes; photographer: Liz Schultz.

Continued on page 12

Making History and Exploring Oberlin!

These photos show OHC visitors and guests enjoying history and one another in a variety of ways! How? Well, through more than 10 onsite youth programs, 25 public programs and events, 48 group tours, 68 youth and adult outreach programs, 150 days of drop-in tours and history walks, and 23,000 website sessions. Not including digital visitors and social media fans, OHC's mighty team of volunteers and staff members counted more than 6,400 people learning about the past and enriching their lives in the present.



Girl Scout Troop #50349 joined Oberlin Heritage Center staff, volunteers, and friends in the Big Parade. Marchers carried signs commemorating Ohio's passage of the 19th Amendment, which would be nationally ratified in 1920.



Hundreds of families and friends came out to brighten downtown Oberlin with art during Chalk Walk in June. The Oberlin Heritage Center is one of the collaborating partners that organizes this town favorite.



Kids had fun delving into history through a variety of camps in 2019, including archaeology, architecture, and a spring camp about how the awful bits of history sometimes led to reforms for the better.



Oberlin Chief of Police Ryan Warfield showed off his skill on stilts at the July Community Picnic. OHC had games and information available at many community events, including Commencement Weekend, Juneteenth, and Family Fun Fair.



Volunteers brought five Oberlin business owners to life at Westwood Cemetery in October. From left to right: Judy Cook portrayed tea shop proprietor Rachel Brightman Rawdon; Joe Peek portrayed entrepreneur Henry Lee; Dennis Cook portrayed hotel owner Marx Straus; Camille Hamlin Allen portrayed milliner Marie de France; Pat Price portrayed her aunt Helen Gorske Sperry.



Audience members kicked off the new year with musician Tim Krugman and his presentation "Music of the American Civil War." Stephanie Kramer followed up in March with a lively portrayal of Katharine Wright, sister to the Wright brothers, and period songs.



More than 200 children and adults celebrated Root Beer and Yesteryear at the Heritage Center in September and enjoyed popcorn, floats, and yard games. Free performances included Oberlin College students Zuguang Xiao and Shangru Du playing the historic Astor piano, Diane Stanley portraying suffragist Lucy Stone, Inez James speaking as 19th century activist Sojourner Truth, and Pat Serio entertaining with the mountain dulcimer (pictured).



Ohio History Service Corps member Riley Thomas continued a multi-year effort of researching the history of downtown buildings and presenting interested owners with free interpretive panels. Here she presents one to John Gorske of Sperry-Gorsky Agency.



OHC was delighted to collaborate again with the Museum of Hispanic and Latino Cultures (Lorain) to present the mini exhibit and program “Our Lady of Guadalupe” during National Hispanic Heritage Month. (pictured: MHLC trustees John Berrios, Guillermo Arriaga, Alfred Reyes)



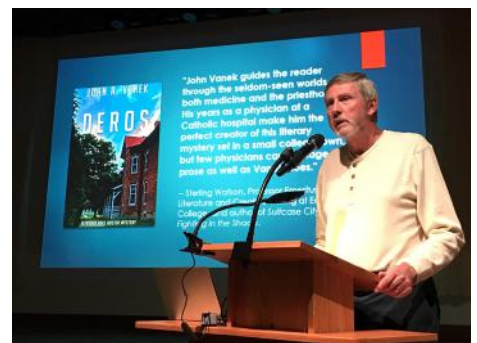
Fifteen teams challenged their memories and one another at Trivia Night, tackling categories such as “Back to School” and “Are You Slogan Savvy?” The team “Gateway Center” is pictured here but ultimately “Bring It On” took home the first place prize bag.



Enthusiastic community members brought their artifacts, heirlooms, and oddities to a one-day “Pop-up Museum,” co-hosted by OHC and the Oberlin African-American Genealogy and History Group. Experts from ICA-Art Conservation also came to offer advice about caring for collections at home.



Rotary Youth Exchange students both inbound and outbound enjoyed a December visit to the Little Red Schoolhouse and practiced their penmanship on the historic slate boards.



During the course of the year, thousands of people gathered for illustrated programs and book readings about black abolitionists, women’s suffrage, faith healing, the space race, a fictional murder mystery set right in Oberlin, and 20th century local industries. Thank you to presenters John Vanek (pictured), Eugene Meyer, Riley Thomas, Matthew Hintz, and Amanda Manahan.

Who's Who at the Oberlin Heritage Center in 2019

Continued from page 9

OBERLIN HERITAGE CENTER ENDOWED LIFE MEMBERS

Individual contributors of \$2,000 or more to an OHC endowment as of 3/15/2020

Platinum (\$50,000 and above)

Anonymous
Richard* and Myriam Hallock/Hallock Foundation
Rob Calhoun and Elizabeth Wilmer

Gold (\$25,000 - \$49,999)

Drs. Amy and Wuu-Shung Chuang
Nicholas R. and Sue Copeland Jones
Dick and Pat* Holsworth
Eric* and Jane Nord

Silver (\$10,000 to \$24,999)

Mrs. William R. Anderson, Jr.
Fran and Roger Cooper
Marge and Walt Edling
Dean and Susan Gibson
Ken Grossi and Sharon Sutherland
Maxine W. Houck
David and Eleanor Ignat
Ann and Dayton Livingston
Emily and T.K. McClintock
Dan* and Marly Merrill
Maxwell G. and Muriel P.* Morgan
Patricia Murphy and Keith Koenning
Cathe Radabaugh
Ed and Ruth* Schwaegerle
Cindy and Eric Severs
Oliver* and Shirley J. Shubert
John and Eugenia Poporad Vanek
Betty and Bob* Weinstock
R. B. (Budd*) and Janet Kelsey Werner
Gail and Reid Wood

Aluminum (\$5,000 to \$9,999)

Jane Blodgett
Ellen and Scott Broadwell
Ann and Norman Craig
Don and Mary Anne Cunningham
Jim and Linda* Donovan
John and Margaret Erikson
Rich Fredrickson and Melanie Satterfield
Karen P. and Terence G. Hobbs
Edward W. and Gail F. Hubbard
Stephen and Mary Ann Johnson
W. Jeanne McKibben, MD
Jane Ross Moore
Cindy and Evan* Nord
Pete and Prue Richards
Dina and Richard Schoonmaker
Bruce and Sue Simonson
Anne F.* and James K. Sunshine
Thomas Van Nortwick and
Mary Kirtz Van Nortwick
Anne W. and Edward J. Wardwell
Catherine Wilber

Copper (\$2,000 to \$4,999)

Erik and Michele Andrews
Anonymous
David R. Ashenurst
Barb and Joyce Benjamin
David* and Sigrid Boe
John Lott* and Katie Brown

Martin and Colette* Buck
Barbara Care
Marianne Cochran
Mae Alice Donner
David and Susan Egloff
Barb and Craig Enos
Adam and Heidi Freas
Carl Gerber
Norma and Dick* Gilbert
Nancy J. Gray
Brian Hedges
Marjorie and Norman Henderson
Bethany and Jeff Hobbs
Don* and Joy Illig
Carl W. Jacobson
Claudia W. and Robert K.* Jones
Jamie Jurado
Carol Lasser and Gary Kornblith
Bert Latran, Jr.
Bob and Carol Longworth
Elisabeth M. Mahjoub
Amanda Manahan and Joe Cross
Suzanne O. McDougal
Anne V. Martin (2020)
Anthony J. Mealy
Cheryl Johnson Mees (2020)
David and Sandra Mellott
Julie Min and Gavin Tritt (2020)
Andrew and Pat* Missler
Thelma J. Morris
Kathleen and Richard Nord
Benjamin G. and Jane Norton
Kristin L. Peterson
Laurel and Rhys Price Jones
Eloise A. and Thomas R.* Pulsifer
Sharon Copeland Ramczyk
Donna and Kurt Russell
Elizabeth Schultz
Linda and Lowell Schultz
Cate and Paul Schwaegerle
Julia S. Shaw
Judy and Warren* Sheldon
Donna M. and Thomas E. Shurr
Bud Spierling & Pauline Handman
Andrée and James Underwood
Don and Mary Louise VanDyke
Jeff and Merrilee Witmer
Helen and Robert* Woodward
James H. Young
Grover and Mary* Zinn

* Deceased

THANK YOU TO THESE ELMs WHOSE LEGACY LIVES ON

These individuals and couples are no longer living, although their investment in the Heritage Center continues to support the ongoing work of the organization.

Platinum (\$50,000 and above)

Ellen Adams
Evan Nord Trust

Gold (\$25,000 - \$49,999)

Estate of Sara Carter Balogh

Silver (\$10,000 to \$24,999)

David and Ricky Clark
Estate of Ronald B. Gorman

Mrs. Ernestine Evans King
Estate of Jean F. Wright

Aluminum (\$5,000 to \$9,999)

Molly Anderson
Charlotte W. Bosch
Marianne Dickerman Caldwell
Bill and Leslie Farquhar
Carol H. Ganzel
Daniel and Elizabeth Goulding
Douglas R. and Shirley R. Johnson
Darlene Rae Krato
Louise S. Richards
David and Jean Schaal
Martha Stacy
Beth K. Stocker

Copper (\$2,000 to \$4,999)

Paul and Sally Arnold
George and Mildred Arthrell
Constance W. Boase
Demaris and Jephtha Carrell
Corning Chisholm
Emiko Hara Custer
Maynard and Sarah Davidson
Mary Wright Fisk
Helen V. Fitzhugh
Alan and Nancy Gage
Thomas and Nancy Gayters
Mildred M. Haines
Glenn and Lillian Hobbs
Dorothy Holbrook
Bill and Betty James
Helen D. Johnson
Mr. and Mrs. R. C. Ninde
Joseph R. and Anita C. Reichard
Robert H. Staples
Nicholas Stevenson
Estate of Jarvis A. Strong, Jr.
Nan B. Szwaja
Katherine K. Tibbetts
Etta Ruth Weigl
James W. White
Keith R. and Victoria K. Young

SUPPORTERS

Oberlin Heritage Center is incredibly blessed and honored by our donors. You believe in our mission and our community, and there are no words to thank you enough.

M = member of OHC
AF = annual fund donor
ELM = Endowed Life Member
EHE = Endowment for History Education

1830 Hallauer House Bed & Breakfast, Joseph and Susan Woodward - M, AF
19th Century Club - M
Martin and Susan Ackermann - M, AF
Mary Adams - M
Adeva Salon and Spa - M
AgriNomix Inc. President, Robert Lando - M
Camille Hamlin Allen - M, AF
Amherst Historical Society - M
Constance Anderson - M
Mrs. William R. Anderson - M
Geoffrey and Cynthia Andrews - M
George and Marlene Andrews - M

Who's Who at the Oberlin Heritage Center in 2019

Erik and Michele Andrews - M, AF
Hank Annable - M, AF
P. Lal Arora - M
William G. Arthrell - M
David R. Ashenhurst - ELM
Walter E. Atwood - AF
Gary and Mary Aufdenkampe - M
Anna and Philip Bak and Family - M
Dorothy Baker - M
Chelsea Baker - M
Gini and Randy Barbato - M, AF
Bill and Inger Barlow - M
Dr. Nicole M. Barnett - M, AF
William Barrow - M
Suzanne Barsay - M
Phyllis A. and Roland M. Baumann - M
Fran and Jack Baumann - AF
Elizabeth and Justin Bausch - M, AF
Jeanne R. Bay - M, AF
Donna and Richard Baznik - M
Ann Beach - AF
Bead Paradise II, Silvija
Aschaffenburg-Koschnick - M
Mary Clare Beck - M
Michelle Belanger - M
Phyllis Bement - M
Ben Franklin Store / MindFair Books,
Krista Long - M
Barb and Joyce Benjamin - ELM
Ruth S. Bent - M
John Berkmeier Painting LLC, John and Betty
Berkmeier - M, AF
Andrew and Jennifer Bertoni - M, AF
Barbara A. Bickel - M
Jane and Ron Bier - M, AF
Edie and Roger Binkley - M
Melanie Birchfield - M
Rachael Blake - M
Sharon W. Blecher - M, AF
Jane T. Blodgett - ELM, AF
George and Gerry Blomgren - M, AF
David W. Blood - M
David* and Sigrid Boe - ELM, AF
Deloris Bohn - M
Janet E. Bolland - M, AF
Tania Boster - M
Rita Bowen - M
Dr. Phyllicia Fauntleroy Bowman - M
Jennifer Bowman - M
Jere and Tom Boyer - M
Tina Brandes - M
David Breitman and Kathryn Stuart - M
Janet A. Brent - M
The Breunig Law Firm Co. LPA,
Erik A. Breunig - M
Smith and Marge* Brittingham - M
Howard and Jean Broadwell - ELM
Ellen and Scott Broadwell - ELM, AF
Broadwell Painting, Scott Broadwell - M, AF
Sonia P. Brokaw - M
Nathan and Kerri Broome - M, AF
Constance Beckwith Brown - M
Christin Locke Brown - M, AF
Katie Brown - ELM
Bob Bruch and Ana Cara - M
Susan Husted Burrows - M
Susan Bruening - M
Barbara J. Bruer - M, AF
Richard W. Bryant - M, AF
Anita Buckmaster - M, AF
Marilyn Burns - M
Business Advisory Services LLC,
Shirley Hull - M
Catharina Meints Caldwell - M
Robert B. Calhoun and Elizabeth L.
Wilmer - ELM, AF
Dwight W. Call - M, AF
David and Sherry Cann - M
Deborah J. Carden - M
Barbara B. Care - ELM
Claudine and Terry Carlton - M
Carlyle Gift & Flower Shop, Francine Toss - M
Mark J. Carnie - M, AF
Kathleen A. Carothers - M
Rachel Carton - M
Banu Casson - M, AF
Angela Cecil - M
Nancy and Richard Cecil - M, AF
Shirley Chambers - M
Preston Chang-Sundin - M, AF
Jane B. and Kenneth R. Cheek - M
Nancy and Tom Cheshire - M, AF
Tracy R. Chevalier - M, AF
Felicia Christian - M, AF
Amy and Wu-Shung Chuang - ELM, AF
Hannah Cipinko - M
Deborah Cipro - M
Jon D. and Sheryl H. Clark - M, AF
George E. Clark - M
John R. and Kathleen M. Clark - M
Susan K. Clark - M, AF
Ed and Marianne Clary - M
Enid J. Cleary - M
Cleveland Restoration Society - M
James and Joan Cobb - M
Marianne Cochrane - ELM
Cohen & Company, Tina M. Dzik - M
Bruce R. Colbert - M
John D. and Ronnie Cole - M
Joseph M. and Suzanne H. Colucci - M, AF
Cynthia Comer and Michael Henle - M
Sid Comings - M
Judith M. Connolly and Kathy J. Reynolds -
M, AF
Anne and Rollin Conway - M, AF
Charles T. Cook - M
Dennis and Judy Cook - M, AF
Julia Cooke - M
Vera E. Cooke - M, AF
Fran and Roger Cooper - ELM
Roger Copeland and Michele Gross - M
Bill and Emerson County - M
Cowhaus Creamery - M
Tim Cowling - M
Cowling Funeral Home, Tad Cowling - M
Ann and Norman C. Craig - ELM, AF
Thomas L. Cramer - M, AF
Judith and Robert Creasy - M, AF
Lynn A. Crivello - M, AF
Rebecca Cross - M, AF
Lesslie Crowell - M
Truman Crowell - M, AF
Don and Mary Anne Cunningham - ELM, AF
Custom Cleaning Services - M
Marsha Darcy - M
Joyce Daugherty - M
Elizabeth and Martin H. David - M, AF
Nancy Davidson - M, AF
Nancy L. Davis - M
Karolyn Dawley - M, AF
Sean Decatur and Renee Romano - M, AF
Phyllis J. DeMark - M, AF
Jan and Jerry DeMarinis - M
Ruby Denneen - M, AF
Emma K. Denny-Smith - M
Andria Derstine - M
Jack and Kathy DeRuyter - M, AF
Ann DeVenny - M, AF
Nicole DeWitt - M
Charles E. Dial - M
Dicken Funeral Home Inc., David Dicken - M
Aimee Dickinson and Tim Hornbeck - M
Kay L. Diederick - M, AF
Albert C. Doane - M
The Dobos Family - M
Kaitlyn T. Donaldson - M, AF
Mae Alice Donner - ELM
J. D. Donovan - ELM, AF
Douds Veterinary Hospital,
John Douds, DVM - M
Lee C. Drickamer and Judith Sellers - M, AF
Marion G. Drummond - M, AF
Robert M. Dudash - M, AF
Louise and Richard Dunn - M
Griffith R. Dye - M, AF
Darlene and David Eakin - M
Robert J. Eakin - M, AF
Dr. Roy U. Ebihara - M, AF
Lori Ebihara - M, AF
Sheila J. Eckstein - M, AF
EcoSphere Associates, Ricki C.
Herdendorf, MAS - M
Eden Valley Enterprises, Bette Lou Higgins - M
Marge and Walter Edling - ELM, AF
Lara Edwards - M
David A. and Susan Egloff - ELM, AF
Anne and John Elder - M, AF
Milton and Margaret-Ann Ellis - AF
Matt and Elizabeth Elrod - M
John Elrod - M
Dale Embry - M, AF
Emerge Inc., Ed and Nyree Skimin - M, AF
Ray English and Alison Ricker - M, AF
Mary Enos - M
Barb and Craig Enos - ELM, AF
Eric and Jane Nord Foundation,
President Virginia Barbato - AF
John and Margaret Erikson - ELM
Anna R. Ernst - M, AF
Barbara and Gordon Evans - M
Aaron Fannin - M
Marny Fannin - M
Ann Farnsworth - M
FAVA, Executive Director Kathleen Jackson - M
Ann and Gerry Findlan - M, AF
David and Nancy Finke - M
Gay A. Fischer - AF
Patricia L. and Richard M. Fishel - M, AF
Sara Fisher - M
Carol and Daniel Fishwick - AF
Stephen FitzGerald and Yumi Ijiri - M, AF
Kimberlie and Stephen Fixx - AF
Gail and Kevin Flanigan - M, AF
Dennis and Sue Flood - M
Rick and Margie Flood - M, AF
Bob and Diane Follet - M
David V. Foos - M, AF
Lesley Forneris - M
Bruce and Linda Fowler - M, AF
Ann M. Francis - M, AF
The Frank Family - M
Arlene Franzen - M
Pauline Freas - M
Adam and Heidi Freas - ELM, AF

Continued

Who's Who at the Oberlin Heritage Center in 2019

SUPPORTERS (continued)

M = member of OHC

AF = annual fund donor

ELM = Endowed Life Member

EHE = Endowment for History Education

Rich Fredrickson and Melanie Satterfield - ELM

Stuart and Diane Frieber - M

Tracey Frierson - M

Barbara and William Fuchsman - M, AF

Ann L. Fuller - M, AF

Functional Physical Therapy - M

Sharon Furrow - M

Jennifer Gallagher - M

Allison and Clare Gallaher - M

Rebecca Ganzel Thompson and Micheal

Thompson - M, AF

Pedro L. and Roberta E. Garcia - M

Gardenscapes by Joanna LLC,

Joanna Thomas - M

Nancy B. Garver - M

Linda C. Gates - M, AF

Suzanne M. Gay and James C. Dobbins - M, AF

Carver Clark Gayton - M

Carl R. Gerber - ELM, AF

Brian and Kendra Gevry - M, AF

H. Dean and Susan R. Gibson - ELM, AF

Barbara and Donald Gilbert - M, AF

Norma B. Gilbert - ELM

William D. Ginn - M, AF

Jack Glazier - M

Global Vocabulary LLC, Paulette Goll - M

Marcia and Samuel Goldberg - M

Alfred R. and Charlotte Goerlich - M

Chè S. and Jose M. Gonzalez, Jr. - M, AF

Theodore R. Goodman - M

Phyllis Gorfain and W. Bruce Richards - M

Thomas W. Gorman - M

Christina Graf - M

Carol B. Graham - M, AF

Jen Graham - M

Nancy J. Gray - ELM, AF

Ken Grossi and Sharon Sutherland - ELM, AF

Mary Lynne Grove - M

Grunwell-Cashero Co., General Manager Frank

Caspio - M

Denny Gulick - M

Glori-june Gyorfi - M

Janet K. Haar - M

J. Lynn Haessly and Andrew Young - M, AF

Judy D. Hahn - M

Mrs. Richard R. Hallock - ELM, AF

Don Hall - M

Susan Haller - M

Jim Hamilton - M

Tacie Hampton - AF

Carrie R. Handy - M

Robert W. Harmon - M

Barbara M. Harper - M, AF

Larry A. and Nancy A. Harper - M, AF

Carol Harvey - M

Susan Edwards Harvith - M

Harry Haskell - M, AF

Olivia Hay - M

Bradley and Nicole Hayes - M, AF

Ruth S. Hayes - M, AF

Jack Heaton - M, AF

Carl and Marcia Heckert - M, AF

Brian D. Hedges - ELM

Angela and Miles Heilman - M

Jean M. Heller - AF

Robert and Jean Hemminger - M

Marjorie and Norman Henderson - ELM

Beverly A. Hentges - M

Herrick Jewelry, Malcolm and Mary Fowler - M

Christa and James Hieb - M, AF

Robert and Kass Hillard - M

William F. Hilton - M, AF

Matthew David Hintz - M

Tom Hoadley and Cindy Lombardo - M

Kevin H. Hobbs - M

Bethany and Jeff Hobbs - ELM, AF

Karen P. and Terence G. Hobbs - ELM, AF

Clyde and Maryann Hohn - AF

Arthur Holbrook - M, AF

Allene C. Holliman - M

Richard R. Holsworth - ELM, AF

The Rich Holsworth Family - M

Roger Horn - M, AF

Jerry and Karen Hottel - M

Maxine W. Houck - ELM, AF

Stephanie C. Howe - M

Catherine and Roberto Hoyle - M

Edward W. and Gail F. Hubbard - ELM, AF

Dennis and Karla Hubbard - M

Linda Huber - M

Alexia Hudson-Ward - M

Carolyn L. Husted - M

David and Eleanor Ignat - ELM

Joylynn M. Illig - ELM

Jay Ingersoll - M

Erik Inglis and Heather Galloway - M

Kari F. Inglis - M

Connie Ippolito - M, AF

Ann Emerich Ingram - M, AF

Sheila M. Ives - M

Diane and Pat Ives - AF

James Jablonski - M

Anne and Leonard Jacko - M, AF

Michael R. and Deborah D. Jackson - M

Patricia Jacobson - M

Carl W. Jacobson - ELM, AF

Gary and Penny Jaffe - M

Kathy and Mark Jaffee - M

Inez James - M

James A. Garfield National Historic Site - M

Adelbert Jenkins - M, AF

Gregory L. Jewett - M, AF

Robin and William Jindra - M, AF

Molly Johnson - M

Eboni A. Johnson - M, AF

Stephen and Mary Ann Johnson - ELM, AF

Nicholas R. and Susan C. Jones - ELM, AF

Claudia W. and *Robert K. Jones - ELM, AF

Ben Jones and Tanya Rosen-Jones - AF

Helmut J. Jungschafer and Lori A. Taylor -

M, AF

Ninita J. Jurado - ELM

David Kaplovitz - M, AF

Marilyn and Robert Kasayka - M, AF

Ondrea Keith - M

Kendal at Oberlin, CEO Barbara W. Thomas -

M, AF

K. Austin Kerr - AF

Nancy L. Kewish - M

Sarah Khalil - M

Dale Kiefer - M

Jiyul Kim and Sheila Miyoshi Jager - M, AF

K-Kon Inc., Keith Konnerth - M, AF

Roderic Knight - M, AF

Anne G. Koenning - M, AF

Scott Koenning - M

Audrey Y. Kolb - M, AF

Gary Kornblith and Carol Lasser - ELM, AF

Stephanie Kramer - M

Evan and Ilana Kresch - M

Lorna and Richard Kretchmar - M, AF

Lois S. Kroc - M

Tim Krumreig - M

Kuno Creative Group, Chris Knipper - M

Rhonda Kunselman - M

Mari Kuroda and Michael Reynolds - M

Kurt G. Sarringhaus Co., L.P.A., Kurt

Sarringhaus - M, AF

Bruce Laczko - M

Rebecca Lahetta - M

William R. Lamme - M, AF

Adina Jocelyn Langer - M

Bert L. Latran, Jr. - ELM, AF



Glenn Hobbs took up the family tradition, becoming the fourth generation to volunteer at the Oberlin Heritage Center.



Scott Broadwell and Pat Ives teamed up to floor and paint the rear porch of the Monroe House and bring it back to its former glory.

Who's Who at the Oberlin Heritage Center in 2019

Patricia Latto - M
 Laura B. Laubenthal - M
 Robin Lauren - M
 Phyllis Lawson - M
 Megan Laycock - M
 Bruce and Nancy Layne - M, AF
 Mary Leek - M
 Pam Lenz - M
 Diana K. Leonard - M, AF
 Alexandra Letvin - M
 Linda D. Lewis - M, AF
 Irwin Lewis - M
 Xiaojia Li - M
 Jiann and Pearl Lin - M, AF
 Lin-Barry Incorporated, Barry and Linda Jones - M, AF
 Fou Tanner Linder - M, AF
 Katherine Linehan and Glenn Loafmann - M, AF
 Paul and Cindra Lipke-Benn - M
 Ann and Dayton Livingston - ELM, AF
 Anita and Tom Lock - M
 Penny J. Locke - M
 Locke's Go Green, Emil Ruth - M, AF
 Alan and Anne Lockwood - M
 Megan and Sylvan Long - M, AF
 Edward L. Long - M
 Curla Stevens Long - AF
 Bob and Carol Longworth - ELM, AF
 Thomas Lopez and Holly Handman - M
 Lorain County Community College, Cynthia Kushner - M, AF
 Lorain County Historical Society, Director Kerri Broome - M
 Lorenzo's Pizzeria, Larry Cariglio - M
 Marian J. Lott - M
 Nina Love - M, AF
 Louise Luckenbill - M
 Rachel Luczkowski - M
 Lupita's - M
 Claudia Macdonald - M
 Christine Mack Joyce - M
 Al and Ann MacKay - M, AF
 Nancy MacRae - M
 Elisabeth M. Mahjoub - ELM, AF
 Main Street Barber - M
 Barry and Sharon Manahan - M
 Amanda K. Manahan and Joseph L. Cross - ELM, AF
 Mandarin - M
 Betsy and Michael Manderen - M, AF
 Winifred D. Manning - M, AF
 Mary A. Manning - M
 Manuel's Barber Shop, Manuel J. Espinoza - M
 Amy Margaris - M
 Anne V. Martin - ELM
 Courtney Martin - M, AF
 Esmeralda Martinez-Tapia - M
 Delbert D. and Emma Jean Mason - M
 James D. Mason - M, AF
 Chris Mason and Laura Slocum - M
 Delbert D. and Emma Jean Mason - M, AF
 Jane A. Mathison - M, AF
 Jean Marie Matthews - M
 Nancy Matthews - M
 Matus Winery, Bob Matus - M
 The Mavrich Family - M, AF
 Sandra McClennen - M, AF
 Emily and T. K. McClintock - ELM, AF
 Nancy McClusky - M
 Joseph McCormick - M
 Vivian McCullough - M
 Carl and Mary McDaniel - M, AF
 Marilynn K. McDonald - M
 The McDonoughs - M
 Suzanne O. McDougal - ELM
 Mary H. McGill - M, AF
 McKay Lodge Fine Arts Conservation Laboratory, Inc., Robert Lodge and Gina McKay Lodge - M
 Dean and Juanita McKee - M
 Kevin McKee and Lauren Watkins - M, AF
 Maren Ann McKee - M, AF
 W. Jeanne McKibben - ELM, AF
 Steven J. McQuillin - M, AF
 Meadowbrook Investment Advisors, Dale Embry - M
 Anthony J. Mealy - ELM, AF
 Cheryl Johnson Mees - M, AF, ELM
 Melanie B. Satterfield, DDS, Inc. - M, AF
 David and Sandra Mellott - ELM, AF
 John and Nicola Memmott - M, AF
 Mercy Health Allen Hospital, President Charlotte Wray - M
 Marlene D. Merrill - ELM, AF
 Sue E. Meyer - M, AF
 Eugene L. Meyer - M
 Ms. Laraine Meyers - M, AF
 Kelly D. Mezurek, Walsh University - M
 Janet Michal - M
 Beverly B. Miller - M
 Ruth Miller - M
 Bill Miller and Ann Pilisy - M
 Julie Min and Gavin Tritt - ELM, AF
 Mary Minter and Michelle Minter - M, AF
 Sharon La Rocca Miranda - M
 Andrew Missler - ELM
 Anne Montoya - M
 Naomi Moore - M, AF
 Jane Ross Moore - ELM, AF
 Maxwell G. Morgan - ELM, AF
 Elizabeth C. Morris - M, AF
 Thelma J. Morris - ELM, AF
 Patricia Murphy and Keith Koenning - ELM, AF
 Ethel M. Muzilla - M
 National Business Brokers, Inc., Michael F. Galbreath - M, AF
 Brian and Judith Nedwek - M, AF
 Mary C. Nelson - M
 Alexandra Nicome - M
 Mrs. Jane B. Nord - ELM, AF
 Cindy Nord - ELM
 Kathleen and Richard Nord - ELM, AF
 Nordson Corporation, President & CEO Michael F. Hilton - M
 Northwest Bank, Oberlin - M
 Benjamin G. and Jane Norton - ELM
 Theodore Nowick and Robert Taylor - M, AF
 OAAGHG - M
 Noel Oakley - M
 Larry K. Oates - M, AF
 Oberlin City Schools, Superintendent David Hall - M
 Oberlin College, President Carmen T. Ambar - M
 Oberlin College Archives, Archivist Ken Grossi - M
 Oberlin Early Childhood Center, Executive Director Tricia Harrel - M
 Oberlin Foot and Ankle, Amanda Meszaros, DPM - M
 Oberlin IGA, Leo Braidio - M
 Oberlin Lakeside Banquet Hall, Robin Rudolf - M
 The Oberlin Market, Elle Ramsey - M
 Oberlin News-Tribune - M
 Oberlin Public Library, Director Darren McDonough - M
 Elizabeth O'Connor - M
 Karl Offen - M
 Ohio Educational Credit Union, Jocelyn Miller - M
 Old Way Farm & Market, Barney and Linda Hartman - M
 Gary Olin and Saranne Nelson-Olin - M, AF
 Bob and Bonnie Oliphant - M, AF
 David and Elaine Orr - M
 Mary Lee Orr - M, AF
 Debra and Gregg Overmann - M
 Nia Owen - M
 Kaye Palacios - M, AF
 Therese Palmer - M
 Susan Palmieri - M, AF
 Delores Pananen - M
 Diantha Pare - M
 Sandi Pasadyn - M
 Allan Patterson - M, AF
 Barbara Patterson - M
 Wesley Patterson - M
 Donna Pearson - M
 Jeanne Pease - M, AF
 Booker C. Peek - M
 Laura Peskin - M
 Harol and John Pesuit - M
 Tom Peters - M
 John E. Petersen and Nancy L. London - M, AF
 Kristin L. Peterson - ELM, AF
 Corinne Petrie - M
 Emily Acton Phillips - M
 Mary Picken - M
 Barbara A. and Ronald A. Pierre - M, AF
 Kate Pilacky - M, AF
 Barbara Piscopo - M, AF
 Brenda Pitts - M, AF
 Bill and Patti Pitts - M
 Pittsfield Township Historical Society, Daniel Clark - M
 PlaceMakers Land Co., Ltd, Todd C. Martz - M
 Steven and Katherine Plank - M, AF
 Laurence and Marjorie Porter - M
 Rebecca Posner - M
 Gail Powell - M
 Dale and Kim Preston - M, AF
 Joe and Pat Price - M, AF
 Mary Price - M
 Christina and Ronald Price - M
 Laurel G. and Rhys Price Jones - ELM, AF
 Kelly Waite Prill - M
 Philip Pritchett - M
 Sarah A. Pryor - M
 Puffer's Floral Shoppe - M
 Eloise A. Pulsifer - ELM, AF
 Quality Tree Service - M
 Diane L. and Ray C. Radabaugh - M
 Cathe E. Radabaugh - ELM, AF
 WOBL & WDLW, Douglas B. Wilber - M
 Rafter A., Ltd., Rich Fredrickson, P.E., P.S. - M, AF
 Sharon Copeland Ramczyk - ELM, AF
 Ratsy's Vintage Store, Ratsy Kemp - M
 Jessie L. Reeder - M
 Barbara and Don Reeves - M
 Karen and Peter Regas - M
 Kathryn L. Reichard - M
 Nina Reid-Maroney - M
 Margaret and Mark Reynolds - M

Continued

Who's Who at the Oberlin Heritage Center in 2019

SUPPORTERS (continued)

M = member of OHC

AF = annual fund donor

ELM = Endowed Life Member

EHE = Endowment for History Education

William H. Rice - M, AF
 Barry and Carol Richard - M
 Pete and Prue Richards - ELM, AF
 Kay Rider - M, AF
 Andy Ries - M
 Tom and Judy Riggle - M, AF
 Cathe Ritz - M
 Mary Eileen Romney - M
 Deborah Roose and David Snyder - M
 Jerene and Paul Rosa - M, AF
 The Rosen-Jones Photography Studio, Tanya
 Rosen-Jones - M
 Beth Rosenquist - M
 Kathleen C. Ross - M
 Rotary Club of Oberlin, Treasurer Dennis A.
 Mavrich - AF
 Ed Rowe - M, AF
 Mary Rowland - M
 Andy and Cindy Ruckman - M
 Elizabeth Rumics - M, AF
 Retta L. Russell - M
 Jerry V. Russell - M
 Donna and Kurt Russell - ELM
 Jacques Rutzky and Dyane Sherwood - M, AF
 Kelly Boyer Sagert - M
 Linda G. Salisbury - M
 John and Karla Sanderson - M
 Susan Sarhan - M
 Rev. Erica Saunders - M
 Jill B. Sawyer - M
 Jean D. Schaefer - M, AF
 Anna Schiff - M
 Jo-Ann Schmauch - M
 Judith A. and Richard G. Schmidt - M, AF
 Eugene Schmiel - M
 Dina and Richard Schoonmaker - ELM, AF
 Elizabeth Schultz - ELM, AF
 Linda and Lowell Schultz - ELM, AF
 Ed Schwaegerle - ELM, AF
 Cate and Paul Schwaegerle - ELM, AF
 Sharon L. Schwenk - M, AF
 Joyce Scott - M
 Ruth E. Searles - M, AF
 John G. and Kathleen A. Secrist - M
 Cary Seidman - M
 Jenny and John Sekulic - M
 Annalee Sekulic - M
 Pat Serio and Bruce Ente - M, AF
 Drew H. Severs - M
 Cynthia and Eric R. Severs - ELM, AF
 Severs & Clark Co., L.P.A., Eric Severs and Jon
 Clark - M, AF
 Robin Hoover Shaffer - M
 Jean L. Shannon - M, AF
 Julia S. Shaw - ELM
 Judy Sheldon - ELM
 Brittnei Sherrod - M, AF
 Gayle Sherry - M
 A. V. Shirk - M
 Louise D. Shoemaker - M, AF
 Thomas E. Shoup - M
 Showalter's Chimney Service Tom Showalter -
 M, AF
 Shirley J. Shubert - ELM, AF

Donna M. and Thomas E. Shurr - ELM, AF
 Shurtleff Cottage Bed & Breakfast, Marsha
 Marsh - M
 Lawrence B. Siddall - AF
 Karin J. Siddall-Hupala - M
 Bill and Sandy Siebensschuh - AF
 Maureen T. Simen - M, AF
 Eugene Foggo Simon - M, AF
 Mary F. Simons - AF
 Bruce and Sue Simonson - ELM
 Simonson Clock Shop, Tim Simonson - M
 Robert M. Singleton - ELM, AF
 Lorri Sipes - M
 Beatrice A. Skeens - M, AF
 Sliman's Chrysler Dodge Jeep Ram, Paul
 Sliman - M, AF
 Ken Sloane - M
 Harold and Linda Slocum - M
 Barb Smith - M, AF
 Chris Smith - M, AF
 Chris and Randy Smith - M, AF
 Irene S. Smith - M
 Karen A. and Michael L. Smith - M, AF
 Nichol and Melissa Smith-Hignite - M, AF
 Nancy G. Snyder - M, AF
 Rachel Smoskey - M
 Steven and Cheryl Souders - M, AF
 Southern Lorain County Historical Society - M
 Donald and Kathryn Spencer - M
 Ruth E. Spencer - M, AF
 Sherry Spenser - M
 Sperry-Gorske Agency, Inc. - M
 Paul R. Spierling and Pauline Handman -
 ELM, AF
 Dr. Arthur W. Sprague - M, AF
 Sarah Andrews Stafford - M
 Katherine Diane Stanley - M
 Ken Stanley and Marta Laskowski - M, AF
 Bennie Stanton and Kimberly Thompson - M
 June and Randy Starcher Wallace Starcher - M
 Margaret C. Stark - M, AF
 Priscilla Steinberg - M, AF
 Daniel Steinberg - M
 Mark R. Stewart - M
 Marilyn Stock - M, AF
 Straight's Sharpening Service, Lloyd and David
 Straight - M
 Subway of Oberlin, Jeff Linden - M
 James K. Sunshine - ELM, AF
 Sustainable Community Associates, Ltd., Josh
 Rosen, Ben Ezinga, Naomi Sabel - M
 Sherry Ann Suttles - M
 Hank Swager and Jillian McFarland Swager - M
 Erin Swenson-Klatt - M, AF
 Salvatore Talarico - M, AF
 Lillie Faye Taylor - M
 Thomas William Taylor - M
 Shirley Taylor - M
 Eileen K. Telegdy - M, AF
 The First Church in Oberlin, U.C.C. - M
 The Hotel at Oberlin, Erica Todhunter - M
 Heidi Thomann Tewartson - M, AF
 Riley Thomas - M
 Harriett A. Thomas - M
 Janis and Robert Thompson - M
 Philip Thornton - M, AF
 Naomi and Willis Todd - M
 Jerry and Melva Tolbert - M, AF
 Grace M. Tompos - M, AF
 Francine Toss - M, AF
 Kathy Toth-Smith - M, AF
 Tracey Jagielski, Realtor - M, AF

Tommy L. Trice - M, AF
 Emily V. Troiano - M, AF
 Bill and Mary Ann Trost - M
 Carol S. Tufts - M
 Christy Perry Tuohey - M, AF
 Turnbull Plumbing & Heating, LLC, Glenn and
 Robin Turnbull - M
 Turnbull Trucking & Excavating, Claud
 Turnbull - M
 Andree and James Underwood - ELM, AF
 Bob and Carla VanDale - M
 Janet B. Van Doren - M, AF
 Thomas and Mary Kirtz Van Nortwick - ELM, AF
 Vandemark Jewelers, Jim Vandemark - M
 Don and Mary Louise VanDyke - ELM, AF
 John A. and Eugenia Poporad Vanek - ELM
 Cynthia R. Verda - M
 Vermilion Valley Vineyards - M
 Visit Lorain County, Jen Kennedy - M
 Dinah and Steve Volk - M, AF
 Marilyn Wainio - M, AF
 Robin Root Wallace - M
 James Leo and Katherine H. Walsh - M, AF
 Margie G. Walter - M
 Dorra B. Ward - M, AF
 Anne W. and Edward J. Wardwell - ELM, AF
 Chuck and Laurene Warfield - M, AF
 Andrew Laurence Watiker - M, AF
 Carol Ann Watkins - AF
 Maryann Hanak Watson - M
 Watson Hardware, Jerry Anderson- M, AF
 Eva and Tom Weber - M, AF
 Kevin and Susan Weidenbaum - M, AF
 Elizabeth B. Weinstock - ELM, AF
 Welcome Nursing Home, Jill Herron - M, AF
 Janet Kelsey Werner - ELM
 Don and Theo Wessell - M
 Western Reserve Land Conservancy, Firelands
 Office, Andy McDowell - M
 Jill and Vern Wettersten - M
 Jerry White - M
 Catherine A. Wilber - ELM, EHE
 Brian Wilbert and Yorki Encalada - M
 Robert O. Williams - M, AF
 Beulah Williams - M
 Linda I. Williams - M
 Martha J. Wilkins - M
 Amy Winnicki - M
 Ben Wisner and Sonia Kruks - M, AF
 Jeff and Merrilee Witmer - ELM, AF
 Steven Wojtal and Wendy Kozol - M
 Kenneth and Joyce Wolfe - M, AF
 Peter H. Wood - M
 Thomas E. Wood - M
 Gail and Reid Wood - ELM, AF
 Wood Shed Lesson Studio, Kevin Jones - M
 Amelia Woodward - M
 Helen Woodward - ELM
 Charles Worcester - M
 Mary K. Worthington and Tom Hinders- M, AF
 Dr. and Mrs. Thomas T.K. Wu - M
 Annessa Wyman - M, AF
 David Young and Georgia Newman - M
 James H. Young - ELM
 Larry and Sue Young - M
 Lynn M. Youngblood - M
 Gerald Zeitlin - M
 Grover A. Zinn, Jr. - ELM, AF
 James E. and Janice C. Zinser - M
 May P. Zitani - M, AF

*Deceased

Who's Who at the Oberlin Heritage Center in 2019

VOLUNTEERS

This list does not include OHC board members and staff members.

Martin Ackermann
 Camille Hamlin Allen
 Zaria Amerson
 Jerry Anderson
 Teri Anderson
 Dave Andrews
 Michele Andrews
 Guillermo Arriaga MHLIC
 Evans Blakely
 Julia Brady
 David Breitman
 Ellen Broadwell
 Jean Broadwell
 Scott Broadwell
 Barbara Bruer
 Marty Buck
 Rob Calhoun
 Angela Cecil
 Mervin Champe
 Kenneth Clark
 Bob Clark
 Melissa Clifford
 Melody Clifford
 Justis Clifford
 Marianne Cochrane
 Bruce Colbert
 Sid Comings
 Sarah Colson
 Judy Connolly
 Anne Conway
 Dennis Cook
 Brittany Craig
 Tom Cramer
 Joseph Cross
 Don Cunningham
 Dan Cunningham
 Kitty Denny Smith
 Chuck Dial
 Shangru Du
 Walt Edling
 Anne Elder
 Elizabeth Elrod
 John Elrod
 Julia Elrod
 Craig Enos
 Adam Freas
 Rich Fredrickson
 Ann Fuller
 Roberta Garcia
 Linda Gates
 Harold "Dean" Gibson
 Linda Gilmore
 Girl Scout Troop 50349
 Che Gonzalez
 Nancy Harper
 Angela Heilman
 Ricki Herdendorf
 Matthew Hintz
 Glenn Hobbs
 Jeff Hobbs
 Karen Hobbs
 Terry Hobbs
 Glenn Hodge
 Dick Holsworth
 Rich Holsworth
 Ann Ingram

Pat Ives
 Penny Jaffe
 Inez James
 Steve Johnson
 Mary Ann Johnson
 Bob Kasayka V
 Marilyn Kasayka
 Jiyul Kim
 Barbara Hiscox King
 Gary Kornblith
 Rhonda Kunselman
 Robert Lando, AgriNomix
 President Larry Lane
 Carol Lasser
 Bert Latran, Jr.
 Nancy Li
 Ann Livingston
 Tom Lock
 Anita Lock
 Betty Mahjoub
 Jeanne McKibben
 Randall McMickens

Tony Mealy
 Sue Meyer
 Anne Montoya
 Jane Ross Moore
 Robert Murphy
 Murray Ridge Volunteers
 Oberlin College Track Team
 Volunteers
 Oberlin College, Day of Service
 Volunteers
 Mary Lee Orr
 PATCO Strike Oral History
 Participants
 Joe Peek
 Kristin Peterson
 Pat Price
 Rhys Price Jones
 Cathe Radabaugh
 Michael Reynolds
 Pete Richards
 Prue Richards
 Mary Rowland

Pat Serio
 John Sherrod
 Donna Shurr
 Jean Simon
 Randy Smith
 Bud Spierling
 Melissa Stalnaker
 Diane Stanley
 Eric Steggall
 Eileen Telegdy
 Melva Tolbert
 Mary Kirtz Van Nortwick
 John van der Pyle
 Geni Vanek
 Jack Vanek
 Margie Walter
 Anne Wardwell
 Emily Winnicki
 Reid Wood
 Zuguang Xiao
 Phyllis Yarber



We had so many people to thank at the Volunteer Breakfast that we had to break the group into two photos!

Continued

Who's Who at the Oberlin Heritage Center in 2019

BUY-A-BRICK FUNDRAISER

Throughout the Oberlin Heritage Center's campus, take a moment to look down and you will see many marvelous memories engraved in the bricks lining the paths! OHC works closely with Midwest Engraving of Wadsworth, Ohio to inscribe bricks with lovely memories. Proceeds from the bricks help support grounds maintenance and landscaping projects. Visit www.oberlinheritagecenter.org for additional information and to order your brick today! Bricks will be installed in 2020.

**ZHANG
ZHONGJING
1986**

**FIRST CHURCH
PILGRIM
FELLOWSHIP**
Kathryn L. Reichard

**TRINACTY
TROIANO
FAMILY 2019**
Emily V. Troiano

**RACHEL AND
PHILIP
THORNTON**
Mrs. Richard R. Hallock

**FOR JIYUL
US ARMY RET
JUNE 2019**
Isaac Kim

**TREVA DUNLAP
1929-2014**
**ADAM CHAMBERS
1971-1971**
Linda D. Lewis

**IN MEMORY OF
WILLIAM J.
GORMAN**
*Don and Mary Anne
Cunningham*

**JILL MCFARLAND
WE LOVE MOMMY**
Hank Swager

**OBERLIN H. S.
CLASS OF 1968**

**OBERLIN H.S.
CLASS OF 1969**
*Stephen and Mary Ann
Johnson*

**SANDRA
PODWALNY
ACTIVIST & MOM**
Alexandra Leclere

**JOHN DUCA
THERESE PALMER
2018**
Therese Palmer

**HECTOR L ROSA
SON**

**TONY R. ROSA
RUNNING DEER
SON**

**LISA ROSA
DAUGHTER OF
BLUE STAR**

**ADAM ROSA
DANCING DRUM
SON**

**THREE
EAGLE CLOUD
HUSBAND**
Three Eagle Cloud

**EMILY RALPH
AND DJ
SAVARESE**

**WINNIE AND
FRENCHY
THORNTON**
Philip Thornton

**OHC THANKS
MARLENE MERRILL**

**OHC THANKS
JUDY COOK**

**OHC THANKS
STEVE JOHNSON**

**OHC THANKS
ED WARDWELL**



Nancy Harper was one of many volunteers who made Trivia Night a success!

PROGRAM AND EVENT SPONSORS

Ben Franklin / MindFair Books

Business Advisory Services LLC

Community Foundation of Lorain County

**Cowling Funeral Home
Herrick Jewelry**

Kurt G. Sarringhaus Co., LPA

**The Nord Family Foundation
Northwest Bank - Oberlin Office**

OAAGHG

Oberlin IGA

Ohio Educational Credit Union

GIFTS TO THE PAT MURPHY ENDOWMENT FOR HERITAGE PRESERVATION

Hank Annable
Nicole Barnett
Shirley Beatty
Ellen and Scott Broadwell
Ann and Norman C. Craig
Don and Mary Anne Cunningham
Mae Alice Donner
Dowling Funeral Home
Kimberlie and Stephen Fixx
Linda Gates
Jack Glazier
Grunwell-Cashero Co
Brian Hedges
Marjorie and Norman Henderson
Bethany and Jeff Hobbs
Edward W. and Gail F. Hubbard
Carl Jacobson
Adelbert Jenkins
Helmut Jungschaffer
Kurt G. Sarringhaus Co., LPA
John Laird
Bert Latran, Jr.
Penny Locke
Amanda Manahan and Joe Cross
W. Jeanne McKibben
Naomi Moore
Thelma Morris
Debra and Gregg Overmann
Elizabeth Schultz
Jean Foggo Simon
Irene Smith
Ruth Spencer
Mary Worthington

BUSINESSES, ORGANIZATIONS, AND OTHERS WHO ASSISTED OR COLLABORATED WITH THE OBERLIN HERITAGE CENTER

AgriNomix
Allen Memorial Art Museum
Almighty Church
Ben Franklin / MindFair Books
Black River Audubon Society
Broadwell Painting
Business Advisory Services
City of Oberlin
Chronicle Telegram
Coalition for Oberlin History
Christ Episcopal Church
EcoSphere Associates
Firelands Association for the Visual Arts (FAVA)
Friends and Descendants of Johnson's Island
Friends of Westwood Cemetery
The First Church in Oberlin, United Church of Christ
Historic Prospect Place
The Hotel at Oberlin



Oberlin College students Olive Hwang and Cady Stoloski spent Winter Term making new costumes for living history events.

Who's Who at the Oberlin Heritage Center in 2019

ICA-Art Conservation
 Pat Ives
 Jewett Family of America
 Kelton House Museum and Garden
 Kendal at Oberlin
 Bert Latran, Jr. – Arborist
 LCCC Wellington Center
 Lorain County Metro Parks
 Lorain County Historical Society
 Lorain Historical Society
 Lorenzo's Pizza
 Matus Winery
 McKay Lodge Fine Arts
 Conservation Laboratory, Inc.
 MikelParis
The Morning Journal
 Mount Zion Baptist Church of
 Oberlin
 Museum of Hispanic and Latino
 Cultures
 National Endowment for the Arts/
 Blue Star Museums Program
 National Trust for Historic
 Preservation
 National Underground Railroad
 Network to Freedom
 The Nord Family Foundation/
 Oberlin Depot
 Northeast Ohio Intermuseum
 Council
 Northwest Bank
 Oberlin African-American
 Genealogy and History Group
 (OAAGHG)
 Oberlin Bookstore
 Oberlin Business Partnership
 Oberlin Cable Co-op
 Oberlin Center for the Arts
 Oberlin City Schools
 Oberlin College Betty Glenn
 Thomas Project
 Oberlin College Bonner Center for
 Community-Engaged Learning,
 Teaching, and Research
 Oberlin College and Conservatory
 Oberlin College Department of
 Environmental Studies
 Oberlin College Libraries, Archives
 and Special Collections
 Oberlin College Theater
 Department
 Oberlin Community Calendar/
 Environmental Dashboard
 Oberlin Community Services
 Oberlin Fire Department
 Oberlin IGA
Oberlin News-Tribune
 Oberlin People Together
 Oberlin Police Department
 Oberlin Post Office
 Oberlin Public Library and The
 Bridge
 Ohio Association of Nonprofit
 Organizations
 Ohio History Connection
 Ohio Local History Alliance
 The Ohio State Reformatory
 Oberlin Municipal Light and Power
 System
 Peace Community Church
 Piatt Castle
 Quality Tree Service
 Rafter A., Ltd.

Sacred Heart Church
 Savannah River Archaeological
 Research Program (University of
 South Carolina)
 Sherry Suttles Documentary Film
 Project
Smithsonian Magazine
 Spring Hill Historic Home
 Stan Hywet Hall and Gardens
 Tech Soup Global
 Time Travelers Network
 Visit Lorain County
 Western Reserve Land
 Conservancy
 WEOL
 WOBC
 WOBL/WDLW
 Women's Equality Day

DONORS OF SUPPLIES, ARTIFACTS AND MISCELLANEOUS

Michele Andrews
 Ben Franklin / MindFair Books
 Nancy Cheshire
 Amy and Wuu-Shung Chuang
 M.D.s
 Fran and Roger Cooper
 Dan Cunningham
 Don and Mary Anne Cunningham
 Joyce Daugherty
 Barb and Craig Enos
*Estate of Tom Gilliland/Joyce
 Gilliland*
 Emma Gilman, *in memory of
 Warren B. Gilman*
 Len Gnizak
 Bethany and Jeff Hobbs
 Phyllis Yarber Hogan
 Edward and Gail Hubbard, *in
 memory of P.D. and Laura R.
 Hubbard*
 Eboni Johnson
 Stephen and Mary Ann Johnson
 Claudia W. Jones
 Laura Slocum
 Maren McKee
 Anthony Mealy
 Julie Min
 Jessa New
 Oberlin Public Library
 Kristin Peterson
 John Poss
 Richard Schmidt, *in memory of
 Esther (Fowls) and in memory of
 Gordon Schmidt and in memory
 of Arba and Mildred Fowls*
 Elizabeth Schultz
 Kenneth Spikowski
 Kevin Stephens
 Lillie Fay Taylor
 Margaret Trent, *in memory of
 Dorothy T. Lloyd*
 Anne W. and Edward J. Wardwell
 WOBL/WDLW
 Gail Wood
 Annessa Wyman



This wonderful team from Murray Ridge spent a summer morning sprucing up the grounds and making OHC beautiful.



Volunteers Barbara Bruer and Melissa Clifford greeted Family Fun Fair participants at OHC's info and games table.



We are always delighted and grateful to have Oberlin College students help during Day of Service.



OBERLIN Heritage CENTER

73½ South Professor Street
MPO Box 0455
Oberlin, OH 44074-0455
(440) 774-1700
www.oberlinheritagecenter.org

Oberlin Community History

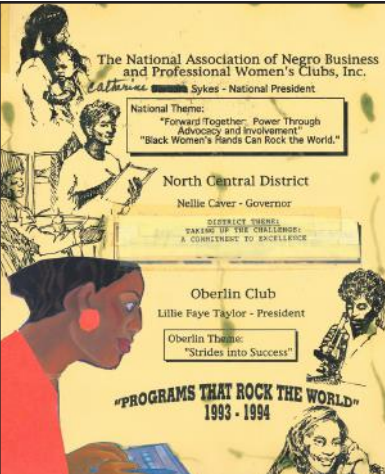
OHC is actively collecting the remembered and physical history of Oberlin. This sampling of items donated in 2019 illustrates diverse pieces of community history.



OHC conducted several oral history interviews about the PATCO/air traffic controller strike of 1981 and strike participant Dan Cunningham donated logs and letters from the incident.



An example of calligraphy and flourishing, this copy of the Emancipation Proclamation was completed by William Warren in 1877 as a gift for his friend Roswell Ward. Warren was an Oberlin College Preparatory Academy student and then writing master living in Oberlin. Warren died in 1896 and is buried in Westwood Cemetery. The piece was passed down through Ward's family before being donated by Emma Gilman.



OHC received a donation of program books from the Oberlin Chapter of The National Association of Negro Business and Professional Women's Clubs. These books document the club's activities between 1988 and 1997 and were donated by Lillie Faye Taylor.



Photos like this one of a Rotary barbeque in 1992 document local clubs, gatherings, and community members, including John Cole and Bert Locke. Donated by the family of Tom Gilliland.



This photograph of Oberlin High School, now operating as Langston Middle School, was taken in 1933 and donated by Richard Schmidt.



This photo represents an ongoing effort to document the commercial history of Oberlin. The two men are yet to be identified but we still get a glimpse of office culture in 1988 at the William Feather Printers company that was located on Artino Street. Donated by the family of Tom Gilliland.