

Together in Purpose

We realize that the last thing you may want to read about right now is the COVID-19 pandemic. Even our vocabulary feels worn: distance, normal, pivot, adapt, digital. Hopefully we are all in a brighter place emotionally than we were one year ago, but the heartache is still here—not only from the pandemic, but also from the trauma of sustained racism and political discord. As much as we want to move on, it is exactly our mission to document these troubled times so that we and future generations can reflect and learn from them. Fortunately, there are also stories of strength, selflessness, innovation, and perseverance. Like all of you, the Oberlin Heritage Center adapted and even flourished in new ways. In these pages we look back at what we accomplished together, even when we were far apart.

We Missed You!

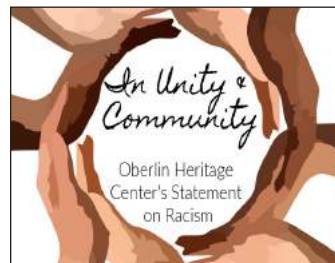


We jumped (or maybe tripped) into the digital realm with meetings, mini history documentaries, and ten public virtual programs.

The week of March 9, 2020 was one for our history books. We hosted peer reviewers for the intense finale of our reaccreditation process at the start of the week. By the end of the week, we were closed and had bid farewell to our Annual Meeting, interns, and any semblance of a program calendar. We found our footing quickly and when the announcement came of our reaccreditation later in the summer it was a burst of wonderful news.



After a sudden transition to working from home, we adopted strict new safety measures and moved some desks, including Amanda Manahan's, to allow us to return to working in the Monroe House on a rotating basis.



We grieved with the nation as Black Americans were murdered and looked inside ourselves to understand how we as individuals and an institution needed to do more to be anti-racist. The work is certainly not done.



When good will and action did indeed "flatten the curve," OHC reopened in June to offer safe opportunities to learn about local history. When COVID-19 cases rose again in the fall, we closed until spring of 2021 to safeguard visitor, volunteer, and staff safety.

Continued on page 2



THE MISSION OF THE OBERLIN HERITAGE CENTER IS TO PRESERVE AND SHARE OBERLIN'S UNIQUE HERITAGE AND TO MAKE OUR COMMUNITY A BETTER PLACE TO LIVE, LEARN, WORK, AND VISIT.

Oberlin Heritage Center Gazette

Annual Report for 2020

June 2021

Vol. XXIX

Editors: Sue Angell and Liz Schultz

Other contributors: Bethany Hobbs, Amanda Manahan, and Maren McKee

Photographers: OHC staff and interns; additional photo credits appear alongside

Layout: Ricki C. Herdendorf, EcoSphere Associates

Together in Purpose

Continued from page 1

A majority of the annual report is always devoted to thanking people for making the Oberlin Heritage Center's work possible, but this year we want to send out special messages.

- Thank you to everyone in the medical field—from the front line, to the lab, to contact-tracers.
- Thank you to everyone who made this year bearable—teachers, volunteers, grocers, suppliers, truckers, cooks, counselors, growers, city workers, faith leaders, cashiers, inventors, Zoom trainers, mask makers, and so many more.
- Thank you to every single supporter of the Oberlin Heritage Center—for your investment in our mission and your encouragement.

Annual Meeting Program Uncovers the Origins of the Eclectic Oberlin College Museum

The Oberlin Heritage Center's Annual Meeting was held—virtually—on July 8, 2020. Participants were treated to a brief overview of Zoom logistics by Executive Director Liz Schultz before the meeting began. The keynote speaker for the night was Amy Margaris, associate professor of anthropology at Oberlin College, and chair of both anthropology and archaeological studies. Amy is an Oberlin College alumna (class of 1996), and received her MA and PhD from the University of Arizona. Her research blends archaeology, material culture, and ethnohistory, particularly of people living in marine and cold climates, such as the Native Alutiiq in Kodiak, Alaska. Amy's unique interests led her to become the curator to a collection of curious ethnographic items housed on Oberlin's campus, which are referred to as the "Oberlin College Museum."

In her presentation, Professor Margaris delved into the

origins of Natural History as a discipline, and the 16th and 17th century trend that saw collections of botanical, mineralogical, and ethnographic items housed in cabinets. (Yes, physical cabinets!) This trend migrated across the ocean to America, and took up residence on college campuses like Oberlin. In 1859, Oberlin professor George Nelson Allen put out a plea for items to fill Oberlin's own natural history cabinet, and alumni responded. By 1903, Oberlin's cabinet (which eventually grew to museum status) housed thousands of items from the categories mentioned above. One of the most prolific donors of cultural materials was Reverend Erwin Hart Richards, a missionary in Africa who sent back thousands of objects from his travels. These objects were so desirable that years later, the Smithsonian Museum



Professor Amy Margaris presents on "The Oberlin College Museum" during the 2020 Annual Meeting.

(which did not have similar items of African origin) traded 40 objects from their Arctic collection for African items from the Oberlin collection!

These Arctic items are now under the purview of Prof. Margaris, who realized their value and invited Alaskan native Rosemary Ahtuanguaruk to campus to consult on the items. Rosemary was able to give Amy and her students detailed accounts of the likely origin of the items, as well as their construction and ultimate use in everyday life. Her visit sparked a renewed effort by Amy and her students to digitize the collection in order to be able to share it more widely, and to reconnect the items back to their source while fostering cultural revitalization efforts. Many of these items can be viewed by searching the internet for the “Oberlin College Ethnographic Collection.”

The business meeting was called to order by Board President Gail Wood, and the minutes from the 2019 Annual Meeting were approved. Gail also announced and congratulated the winners of the Hubbard Prize, which was awarded during National History Day, in April 2020. The winners were Emma Kim, Daria Martz, and Greta Arbogast, from Oberlin High School, who together created a documentary titled “Breaking the Barriers of Climate Change in Higher Education: Oberlin College’s Approach to Sustainable Development.” Their teacher and mentor was Donna Shurr, long-time OHC supporter and member. This annual prize is funded by OHC members Ned and Gail Hubbard.



Emma Kim, Daria Martz, and Greta Arbogast with OHC Museum Education and Tour Coordinator Amanda Manahan.

New trustees taking their seats on the OHC board of trustees in 2020 were: Meisha Baker, Lori Ebihara, Jiyul Kim, Ed Wardwell, and Father Brian K. Wilbert.

Meisha Baker

Meisha Baker has deep roots in Oberlin and is now the principal of one of the very schools she attended, Eastwood Elementary School. After graduating from Oberlin High School, she earned her BA in human development (elementary

education) from Antioch College and then a Masters of Education in middle child education from the University of Toledo. After several years of working in the Lorain City School district, she was appointed principal of Eastwood Elementary in 2019. Meisha has been honored with the Oberlin Unit of the NAACP Education award. She first became involved with OHC as a docent and is now excited to serve on the board.



Lori Ebihara

Lori Ebihara is the manager of Academic Operations and assistant to the Dean of the College of Arts and Sciences at Oberlin College. She is an Oberlin native and graduate of Oberlin High School and The Ohio State University. Lori previously worked in athletic administrations for the Big Eight Conference, Big Twelve Conference, Baylor University, and the University of Maryland.

Jiyul Kim

Jiyul Kim is a retired Colonel of the United States Army and currently a visiting instructor of history at Oberlin College. He teaches classes on globalization, war and civilization, the Asian-American Experience, and national security policy. Col. Kim earned a BA in anthropology and biology from the University of Pennsylvania, a Masters in regional studies (East Asia) from Harvard, graduated from the U.S. Army Command & General Staff College and U.S. Army War College, and has completed all but his dissertation from Harvard in history and East Asian languages. He has published on topics including history, culture, archaeology, and the military. He is currently serving as the grant review chair of the Oberlin Schools Endowment Fund Board. Several of Jiyul’s children have participated in OHC programs and camps over the years. Jiyul presented the excellent program “The Korean War: How it Changed Our World” for the Oberlin Heritage Center in 2016.

Continued on page 6

Financial Report

On page 5 you will find a summary of the Oberlin Heritage Center's unaudited financials for fiscal year 2020. An audited report of OHC's Statement of Activities, Statement of Financial Position, and Functional Expenses for 2020 prepared by Barnes Wendling CPAs will be available on OHC's website once complete. Prior year audits for the Oberlin Heritage Center and its two wholly owned subsidiaries, OHC Properties, Inc., (a property holding agency for 81 S. Professor Street) and Vineway, LLC (a commercial rental property at 82-86 South Main Street) and IRS Form 990s for OHC can also be found on the website.

Like most businesses and non-profits, adaptation was key in 2020. The Oberlin Heritage Center adjusted its tours, programs, and workspaces to continue sharing Oberlin's history while keeping the public, staff, and volunteers safe from the spread of COVID-19. Many plans OHC had for 2020 were cancelled, postponed, or had to be re-envisioned to comply with our new virtual, masked, and socially-distanced reality. But the year did show us how we could – and did - adapt with help from long-term supporters and through new grants and government programs created to help organizations like OHC with their loss of projected income and the addition of unanticipated expenses.

Members and donors were vital to getting through the year – especially with Annual Fund donations – allowing OHC to continue behind-the-scenes work even during two separate periods of public closures. Generous support from the Community Foundation of Lorain County, Nordson Corporation, and the newly created Paycheck Protection Program (PPP) helped OHC maintain staffing levels and hire summer interns as originally planned. Smaller grants from the Community Foundation of Lorain County's Lakeland Fund and the Ohio History Connection / Ohio History Fund COVID-19 Emergency Grant program gave OHC the means to transition to virtual programs, remote work, and socially distanced spaces. A charitable bequest allowed us to continue to add to our Endowment for Heritage Preservation and plan for future technology upgrades. Necessary work on the Monroe House foundation occurred thanks to a grant from The Nord Family Foundation. Funding from the City of Oberlin Sustainable Reserve Fund let OHC build a pollinator garden on the grounds with the help of staff and volunteers when it was safe to do so.

While some projects were able to proceed due to previously expected grant income, the Oberlin Heritage Center staff, with guidance from the Board of Trustees,

made sure to have contingency plans in place as we navigated an uncertain year. Purchases were kept to those that were necessary to maintain operations or had a designated funding source to cover the expense. Thanks to continued Annual Fund donations and membership renewals, plus reductions in program costs and printings, personnel changes, State of Ohio workers' compensation rebates, and a grant from Ohio Humanities for a 2021 documentary film project, we were lucky to not have to implement any of our worse-case-scenario contingency plans. News predictions of an uncertain investment market turned out to be unfounded as our endowments fared well and even saw growth to their balances.

Despite the unknowns, OHC ended the year better than we had anticipated when we first closed our doors to the public in March 2020. Now, as we gradually add more tours and programs to our events calendar, OHC remains prudent in its spending even as we can see a light at the end of the tunnel. We know the importance of being sustainable not only one year from now, but even years into our future when COVID-19 will be a part of our history. Fiscal questions can be directed to Board Treasurer Laurel Price Jones and Executive Director Liz Schultz and we are always looking for new members to join the Finance Committee.

*Prepared by Bethany Hobbs,
Business Manager*



Youth volunteer Glenn Hobbs captured this aerial drone shot of the Monroe House.

PROGRAM AND EVENT SPONSORS

Community Foundation of Lorain County

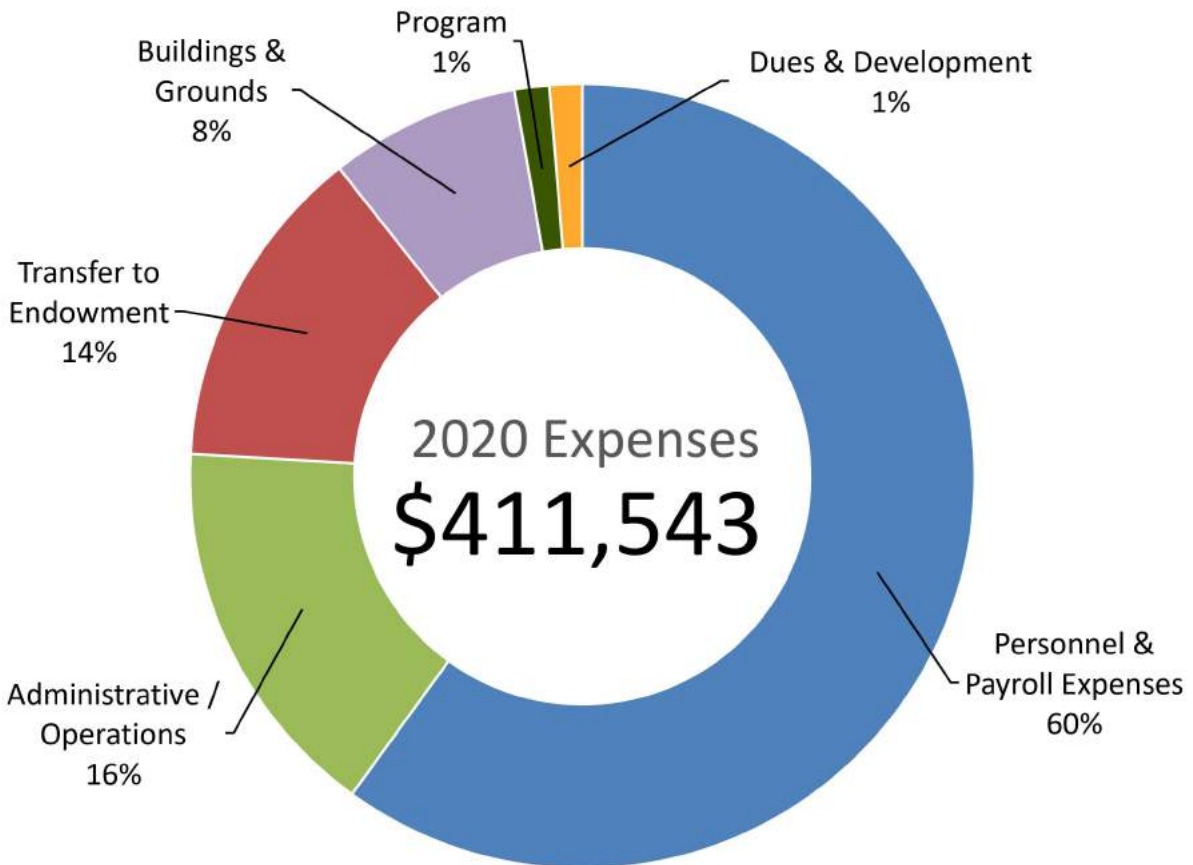
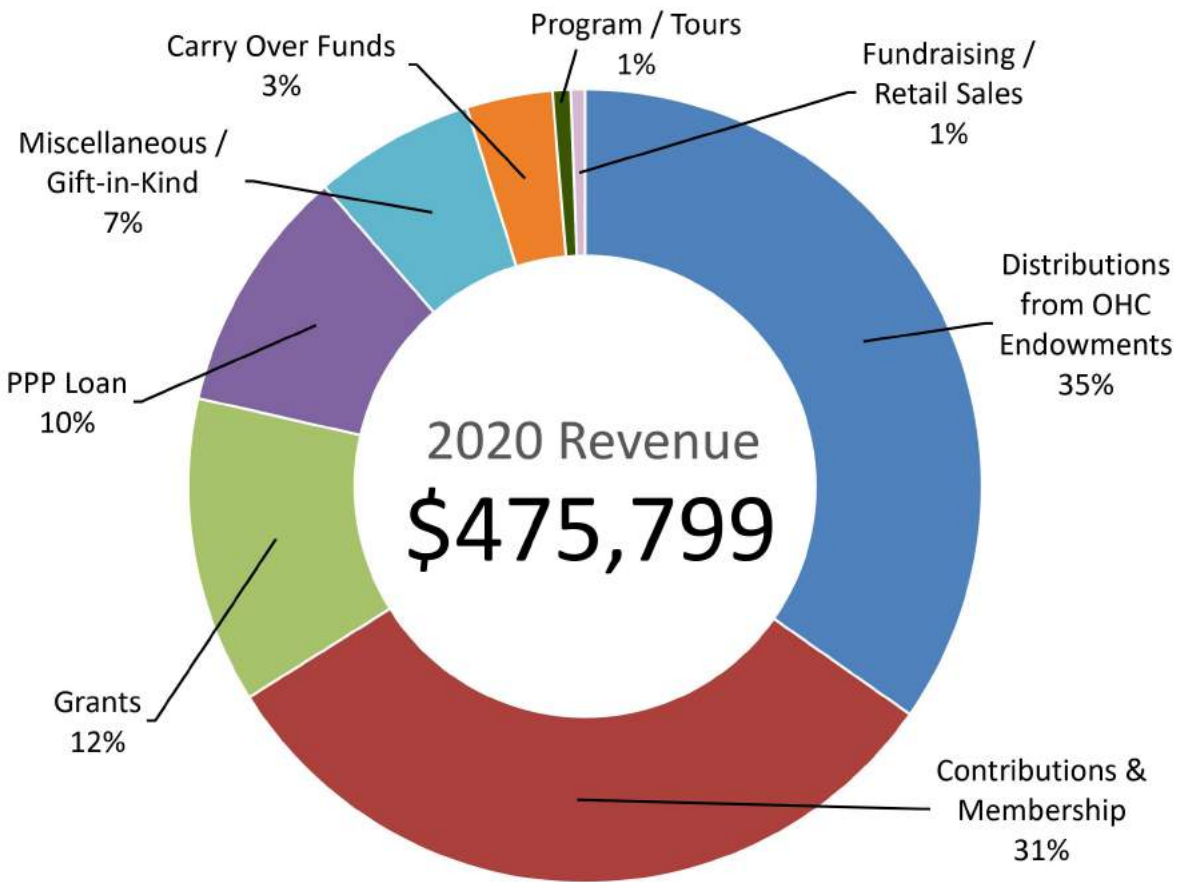
Kurt G. Sarringhaus Co., LPA

Northwest Bank - Oberlin Office

OAAGHG

Oberlin Public Library

Ohio Humanities



Annual Meeting

Continued from page 3

Ed Wardwell

Ed Wardwell is returning to the board after a year as an honorary trustee. Ed originally joined the Oberlin Heritage Center board in 2009 and was later elected treasurer and served on the Strategic Plan Committee. Ed is a retired non-profit administrator with experience in business, applied behavioral science, investment, management, and finances. He has also served as the treasurer of Kendal at Oberlin Residents' Association, and on the board of the American Yoga Association and Murtis H. Taylor Multi-Service Center in Cleveland. His wife Anne Wardwell serves on the Heritage

Center's Collection's Committee and together they enjoy travelling, among many other hobbies.

Father Brian K. Wilbert

Father Brian K. Wilbert is familiar to many in Oberlin, having served as the rector of Christ Episcopal Church from 1996 to 2019. Fr. Wilbert earned a BA from Kenyon College, Master of Divinity from Bexley Hall Seminary, and a Doctor of Ministry from the Seabury Western Theological Seminary. He has served on the boards of the Oberlin Area Cooperating Ministry and Oberlin Weekday Community Meals, and has also taught as an adjunct instructor at LCCC. Fr. Wilbert is a history enthusiast and has lent his time to preserving and sharing the history of the Episcopal Diocese of Ohio as well as rescuing materials collected by resident historian Richard Lothrop. He also enjoys genealogy, music, the history of recorded music, tinkering with his

1923 Model T. Ford, and keeping up his historic home on Cedar Street.

In addition, long-time OHC members and former trustees Judy Cook and Marly Merrill were named to the roster of honorary trustees.

The 19th Annual OHC Community Awards were not announced for 2020, due to the pandemic. Awardees who received the nomination last year will be recognized at the 2021 Annual Meeting.



BOARD PRESIDENTS PAST AND PRESENT

**Oberlin Improvement Society
(later renamed Oberlin Village
Improvement Society/OVIS)**

1903 - 1959 Presidents included:

J.F. Randolph
Giles Waldo Shurtleff
Adelia Field Johnston
W.F. Bohn
Helen White Martin
Louis E. Lord
Paul B. Sears
Ira L. Porter

Oberlin Historical Society

1960 - Cliff A. Barden
1961-1964 - Donald M. Love

Oberlin Historical and Improvement Organization/Oberlin Heritage Center

1964-1967 - Frank C. Van Cleef
1967-1969 - John A. Cochrane
1969-1972 - Raymond A. Campbell
1973-1983 - Stephen Johnson Jr.
1985-1990 - Robert D. Jenkins
1990-1998 - Marianne Cochrane
1998-2001 - Patricia Holsworth
2001-2003 - Roberta Garcia
2003-2005 - Cathe Radabaugh
2005-2010 - James W. White
2010-2014 - Walter Edling
2014-2016 - Nicholas R. Jones
2016-Present - Gail Wood

Who's Who at the Oberlin Heritage Center in 2020

BOARD OF TRUSTEES

Gail Wood, President
Ken Grossi, 1st Vice President
Eboni Johnson, 2nd Vice President
Barbara Enos, Secretary
Laurel Price Jones, Treasurer

Meisha Baker
Amy Chuang
Judy Cook (term ended 2020)
Kaitlyn Donaldson
Lori Ebihara
Carl Jacobson
Claudia W. Jones
Jiyul Kim
Marlene Merrill (term ended 2020)
Julie Min
Brittnei Sherrod
Nichol Smith-Hignite
Edward J. Wardwell
Fr. Brian Wilbert
Annessa Wyman

Honorary Trustees

Camille Hamlin Allen
Michele Andrews

Roland Baumann
Richard Baznik
Sigrid Boe
Howard Broadwell
Scott Broadwell
Robert B. Calhoun
Marianne Cochrane
Fran Cooper
Judy Cook
Walter Edling*
Adam Freas
Rich Fredrickson
Roberta Garcia
Bradley A. Hayes
Richard Holsworth
Stephen Johnson III
Nicholas R. Jones
Carol Lasser
Bert Latran, Jr.
Ann Livingston*
Elisabeth M. Mahjoub
W. Jeanne McKibben
David W. Mellott
Marlene Merrill
Cathe Radabaugh
Dina Schoonmaker

Who's Who at the Oberlin Heritage Center in 2020

Shirley Shubert*
 Donna Marie Shurr
 Eugene Foggo Simon
 Thelma Quinn Smith
 James R. Underwood
 Mary Kirtz Van Nortwick
 Eugenia Poporad Vanek

“**” = Deceased

STAFF MEMBERS

Elizabeth Schultz, Executive Director
 Sue Angell, Communications and
 Development Coordinator+ (July
 2020-Present)
 Bethany Hobbs, Business Manager+
 Amanda Manahan, Museum Education &
 Tour Coordinator
 Maren McKee, Collections Manager+
 Alex Shaver, Visitor Services Assistant+
 Veronica Vanden Bout, Communications
 and Development Coordinator+
 (January 2020-July 2020)
 Barbara Wolfe Brown, Museum
 Housekeeper+
 Mary Worthington, Museum
 Housekeeper+

“+” = Part-time staff member

Ohio History Service Corps/ AmeriCorps Member

Katrina Walker
 (term began September 2019)
 Marissa Hamm
 (term began September 2020)

Staff Provided by Vantage Aging (formerly Mature Services, Inc.)

Bob Williams

Student Interns and Volunteers (from Oberlin College except as noted)

Carson Bauer (Fall) (OHS Volunteer)
 Natalie Brennecke (Summer Junior Intern)
 Colby Fortin (Spring)
 Nora Mendez (Spring)
 Logan McDermott-Mostowy (Spring)
 Wesley Patterson (Spring, Fall, & Summer)
 (also a Bonner Scholar)
 Joshua Rhodes (Spring & Fall)
 (also a Bonner Scholar)
 Jacob Selent (Summer LLCIP Intern)
 (Miami University)
 Alex Shaver (Summer) (CSU)

Board Committee Chairpersons

Executive – Gail Wood
 Development – Gail Wood
 Finance – Laurel Price Jones
 Governance – Barb Enos

Special Interest Group Chairpersons

B&B – Gail Wood and Barb Enos, co-chairs
 Collections – Maren McKee, staff liaison
 Diversity, Equity, & Inclusion –
 Fr. Brian Wilbert, chair
 Docents – Amanda Manahan, staff liaison
 Oral History – Carl Jacobson, chair
 Westwood Inventory Project – Liz Schultz,
 staff liaison

Vineway, LLC, Board of Managers

President – Scott Broadwell
 Secretary – Michael Reynolds
 Board Members – Erik Breunig, Adam Freas,
 Jeff Hobbs, Kristin Peterson
 OHC Board Liaison –
 Lori Ebihara

Vineway, LLC, Property Manager

Mike Galbreath, National Business Brokers

OHC Properties, Inc., Board of Directors

President – Rich Fredrickson
 Vice-President – Terry Hobbs
 Secretary – Sarah Colson
 Treasurer – Cathe Radabaugh
 Board Members – Jerry Anderson, Craig
 Enos
 OHC Board Liaison – Lori Ebihara

OHC Properties, Inc., Property Manager

Michele Andrews

Internships, Training Programs, and Professional Development Support

AmeriCorps

With support from The Nord Family
 Foundation and the Ohio History Service
 Corps/Ohio History Connection

Community Foundation of Lorain County

Leadership Lorain County Intern Program

Nordson Corporation

Oberlin College Bonner Center for Community-Engaged Learning, Teaching and Research

Oberlin College Community-Based Work Study Program

Vantage Aging



OHC staff members became very familiar with the Zoom platform during 2020, using it to host everything from weekly staff meetings to OHC's Annual Meeting to our fall Trivia Night!

OHC welcomed Sue Angell as the new Communications and Development Coordinator in July of 2020.

Who's Who at the Oberlin Heritage Center in 2020

VOLUNTEERS AND ORAL HISTORY PARTICIPANTS

This list does not include OHC board members and staff members.

Carmen Twillie Ambar
 Cynthia Andrews
 Dave Andrews (Super Dave)
 Michele Andrews
 Ann Beach
 Mary Behm
 Leo Braid
 Scott Broadwell
 Betsy Bruce
 Alan Campbell
 Angela Cecil
 Marianne Cochrane
 Sid Comings
 Judy Connolly
 Anne Conway
 Judy Cook
 Tad Cowling
 Mary Anne Cunningham
 Gio Donovan
 Aiko Ebihara
 Elizabeth Elrod
 Craig Enos
 Rita Fitch
 Margie Flood
 Chris Frank
 Rich Fredrickson
 Ann Fuller
 Meredith Gadsby
 Glenn Gall
 Roberta Garcia
 Jen Graham
 Janet Haar
 Brianna Hayes
 Rob Hillard
 Glenn Hobbs
 Jeff Hobbs
 Annetta Horton
 Kathy Jaffee
 Robin Jindra
 Steve Johnson
 Roderic Knight
 Audrey Kolb
 Rhonda Kunselman
 Mari Kuroda
 Gunnar and Leslie Kwakye
 Brittany Labinger
 Becky Lahetta
 Larry Lane
 Carol Lasser
 Bert Latran, Jr.
 Brenda and Randy Leiby
 Nia Lewis
 Jiann Lin
 Bob and Carol Longsworth
 Amy Margaris
 Carl and Mary McDaniel
 Stanley Miller



Alex Shaver served as a summer intern and then was hired on as the OHC Visitor Services Assistant during the fall of 2020. In addition to helping with tours and front office duties, Alex researched and wrote several new history features that are posted on the OHC website.



Jacob Selent served as an intern with OHC during the summer of 2020 through the Leadership Lorain County program and, among other activities, finalized a history feature about John Mercer Langston.



Natalie Brennecke served as OHC's Junior intern during the summer of 2020. She assisted with camps, tours, and wrote a history feature about the Burrell-King House, which now hosts the Oberlin Community Music School.



Long-time OHC student volunteer and camp assistant Zaria Amerson celebrated her graduation from Elyria High School during a historic year.

Anne Montoya
 Oberlin Rotary Club Volunteers
 Wesley Patterson
 Marcia Peterson
 Pat Price
 Rhys Price Jones
 Cathe Radabaugh
 Kathy Reynolds
 Jerry Rhodes
 Prue Richards
 Craig Robinson
 Maggie Robinson
 Ida Jean Robinson Brown
 Julia Rohde
 Wendell Russell
 Jordann Sadler
 Centrilla Scott



Katrina Walker (left) finished her service as an AmeriCorps/Ohio History Service Corps member at OHC in the fall of 2020. Marissa Hamm (right) was hired for the position during the 2020-2021 year.

Pat Serio
 Sarah Shofstall
 Donna Shurr
 Linda Slocum
 Diana Steele
 Eileen Telegdy

Francine Toss
 Ryan Warfield
 Joan Webster
 Charlotte Wray
 Phyllis Yarber Hogan

Continued on page 14

Preserving Pieces of History during a Pandemic

Being shut down didn't mean OHC was quiet, either in terms of programming or behind-the-scenes preservation and maintenance projects.



Thanks to a grant from The Nord Family Foundation, OHC was able to hire Grunwell-Cashero to repair and coat the base of the Monroe House, as well as replace a few deteriorated sandstone pavers.

In addition to collecting photos and objects documenting a tumultuous year, volunteers collected an amazing number of new oral histories about the pandemic and the history of the local schools. Here, retired teacher Gail Wood is interviewing active teacher Donna Shurr.



After many years and many repairs, hairline cracks in the ceramic signaled the retirement of what was purportedly the "oldest toilet in Oberlin." On the plus side, the new fixture is far more environmentally-friendly.



Even before the pandemic began, the OHC team masked up to remove the dusty, crumbling carpet pad from the 1884 Jewett House and replace it with a fresh, new layer to protect the wooden floors.



Staff were routinely checking the buildings during the shutdown, and so were able to address a pipe leak in the basement of the Jewett House before any collections items were damaged. (Thanks Turnbull Plumbing!)



Even the tiniest roofs need some TLC. Thanks to board member Nikki Smith-Hignite for putting new cedar shakes on the Main Street kiosk.

Do you have images, writings, or objects related to the COVID-19 pandemic that could teach future generations? Consider donating original materials (or their copies) to OHC by contacting Collections Manager Maren McKee at history@oberlinheritage.org. Thank you to all who have already contributed!

On the OHC Grounds

OHC looked to the great outdoors in 2020 for fun, relaxation, involvement, and inspiration.



When honorary trustees Cathe Radabaugh and Marianne Cochrane volunteered to pick up sticks in the spring of 2020, we were so excited to see people that we both took photos!



One of OHC's spring visitors was a fawn, who disappeared with momma soon after this photo.



Blossoms framed the Civil War-era barn behind the Jewett House.



Grounds Day was busy with staff and volunteers lending a hand to trim trees, cultivate the fern bed, and plant new flowers. With support from the City of Oberlin Sustainable Reserve Fund, OHC was also able to construct its first pollinator gardens. Individuals pictured include Angela Cecil, Scott Broadwell, Craig Enos, Bethany Hobbs, Glenn Hobbs, Jeff Hobbs, Mari Kuroda, Larry Lane, Bert Latran, Jr., and Amanda Manahan.



With the new pollinator beds, blossoms, and “lawn flowers,” OHC has been the site of a honey bee swarm more than once. Beekeepers Randy and Brenda Leiby came out to move this swarm to a relaxing home with fewer passing pedestrians.



Volunteers like Nora Mendez, who came out for just a few hours a month, had a big impact in making the grounds safer and more enjoyable for all visitors.



OHC brought history outdoors since people couldn't come indoors. This “Valiant Visionaries of the Vote” yard sign series produced through Ohio Humanities, Northeast Ohio Suffrage Centennial, and Serve Ohio/Ohio History Service Corps celebrated the historic work of a variety of leaders and marked the 100th anniversary of women’s right to vote.



OHC’s central location makes it a picturesque mini park for residents and students year-round.



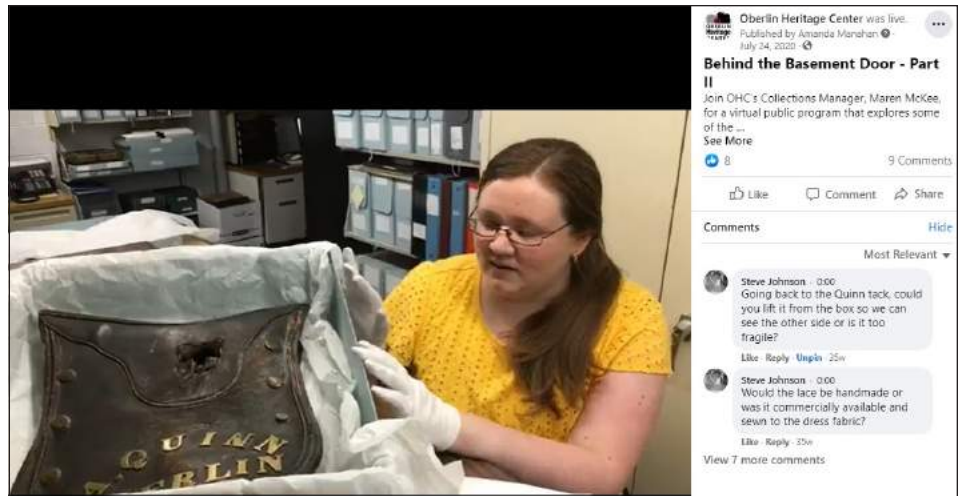
Rotary Board President Barb Thomas edged our front path.



We were incredibly grateful to the Oberlin Rotary Club for scheduling several of their service days at OHC to help with much-needed weeding and trimming.

The Mission Continues

OHC started the year with school tours and public programs as usual, but by April we shifted to online programming and over-the-phone conversations to stay connected with our members. We were so nervous during our first live digital program (a wonderful collaborative virtual tour with the Allen Memorial Art Museum), that we didn't capture even one screen shot! But, as time passed, we became more tech-savvy and even dared to take Trivia Night online in November. Yes, we missed Oberlin's big community events and commemorating the 100th anniversary of suffrage, but we still had much to celebrate. Enjoy the photo highlights of our journey!



Collections Manager Maren McKee led two live "Behind the Basement Doors" Facebook events featuring objects from OHC's collections, including this saddle owned by teamster James Quinn. More than 500 people were reached through these virtual programs.



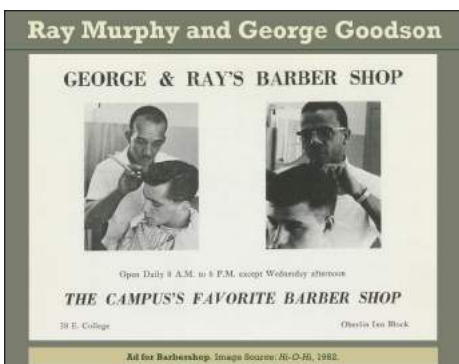
Dr. Ric Sheffield presented a superb, provocative Black History Month program about the right to vote in Reconstruction Ohio. It was a pleasure collaborating with the Oberlin Public Library, Oberlin African-American Genealogy and History Group, and Ohio Humanities for this endeavor! (pictured: OHC Director Liz Schultz, Dr. Sheffield, OAAAGHG President and OHC board member Annessa Wyman)



Pat Gorske Price volunteered for an encore recorded portrayal of her aunt and business woman Helen Gorske Sperry (1909-1978), which is now available to view on YouTube 24/7.



OHC adapted its two youth summer camps, Architecture and Folk Ways, so that some days were in-person and others were conducted virtually or through takeaway materials.



OHC Museum Education and Tour Coordinator Amanda Manahan gave an encore presentation of "A History of African-American Business Owners" via Zoom. Each session offered new information shared by community members and family who remember these businesses.



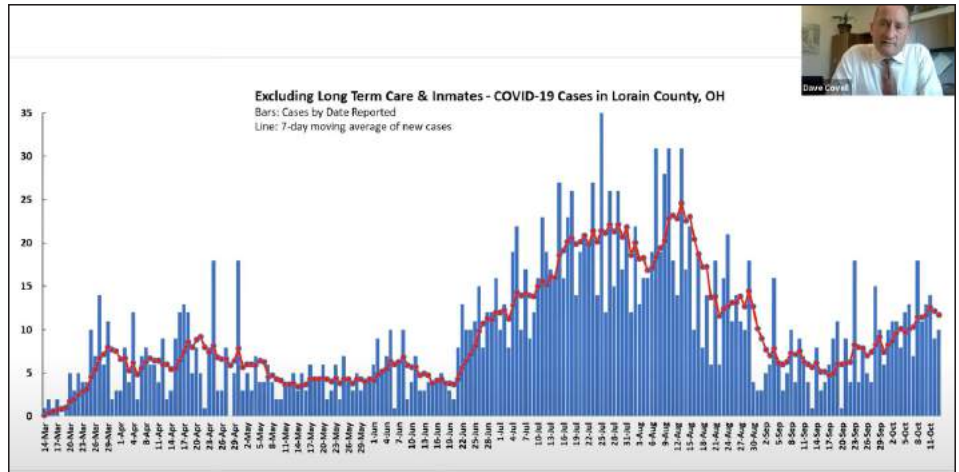
OHC hosted the travelling exhibit "Ohio Women Vote: 100 Years of Change" for two weeks in September. The exhibit was created by the Ohio History Connection with funding from Ohio Humanities. OHC added interactive elements and biographies of Oberlin women who broke political barriers.



Jen Graham led OHC's last in-person public presentation of the year at Kendal at Oberlin in March. Audience members celebrated Women's History Month by learning how female naturalists helped develop and popularize the use of field guides.



Ohio History Service Corps Member Katrina Walker led students from St. Mary Catholic School of Vermilion through one of the last school visits to the Jewett House in spring of 2020.



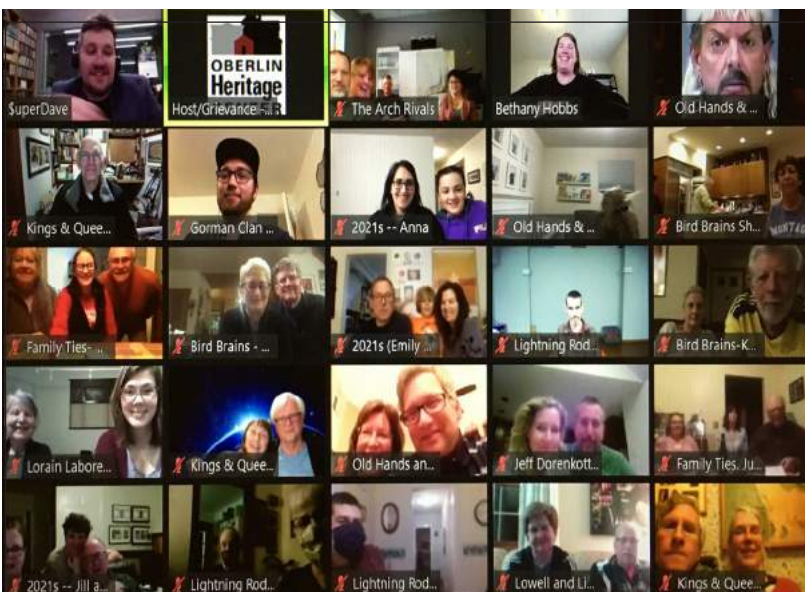
Calling back to its roots as a community improvement organization, OHC invited staff of Lorain County Public Health to share an update about the pandemic, including trends, successes, and challenges.



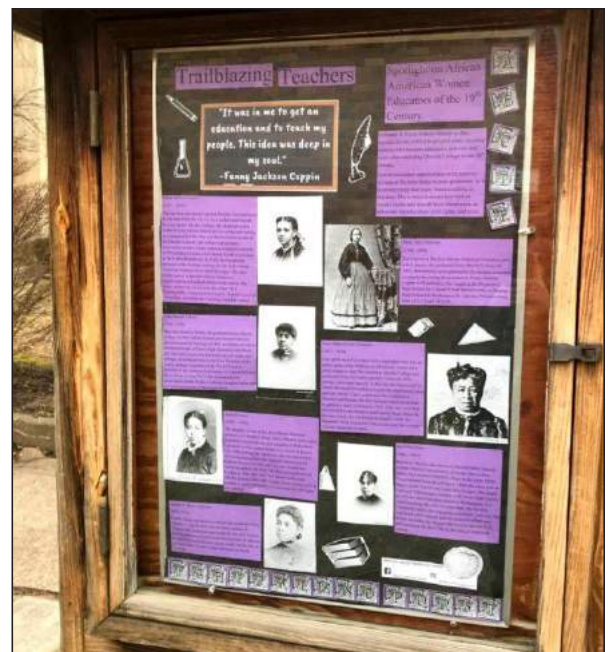
Katrina Walker presented a Zoom program about Edmonia Lewis, Anna Julia Cooper, Ruth Anna Fisher, and Mary Burnett Talbert that examined the success these women had in the art, academic, activist, and archival worlds in Europe. Their achievements were often contrasted with the racial barriers they faced in the U.S.



Rod Knight, Professor Emeritus of Ethnomusicology at Oberlin College, explored the life of inventor and entrepreneur Elisha Gray with a focus on his invention of electric music.



What state has the nickname "Equality State?" We were excited to have 14 teams and 79 players participate in OHC's online Trivia Night. It was another night of fun competition and learning. Answer: Wyoming.



Ohio History Service Corps members Katrina Walker and Marissa Hamm created Main Street kiosk displays and social media history posts throughout 2020, including this display about trailblazing African American women educators of the 19th century.

Who's Who at the Oberlin Heritage Center in 2020

Continued from page 8

GIFTS TO THE PAT MURPHY ENDOWMENT FOR HERITAGE PRESERVATION AND OTHER ENDOWMENTS

**ELM donors are recognized elsewhere*

Geoffrey and Cynthia Andrews
Meisha Baker
Rachael Blake
Jane Blodgett
Ellen and Scott Broadwell
Martin Buck
Don and Mary Anne Cunningham
Mae Alice Donner
Robert Eakin
Dale Embry
Anna Ernst
Estate of Oliver and Shirley Shubert *
Mrs. Richard Hallock
Bethany and Jeff Hobbs
Edward W. and Gail F. Hubbard
Patricia Jacobson
Carl Jacobson
Helmut Jungschafer and Lori A. Taylor
K. Austin Kerr
Nancy Kessler
Bert Latran, Jr.
Richard and Sarah Laux
W. Jeanne McKibben, MD
Maxwell G. Morgan
Thelma Morris
Patricia Murphy and Keith Koenning
Cathe Radabaugh
Maureen Simen
Robert Singleton
John A. And Eugenia Poporad Vanek
Mrs. Janet Kelsey Werner
Patricia Williams

OBERLIN HERITAGE CENTER ENDOWED LIFE MEMBERS

*Individual contributors of \$2,000 or more to
the endowments as of 3/15/2020*

*+ Marks heritage Visionary/financial estate
gifts in addition to ELM status*

Platinum (\$50,000 and above)

Anonymous
Rob Calhoun and Elizabeth Wilmer
Richard* and Myriam Hallock/Hallock
Foundation

Gold (\$25,000 - \$49,999)

Drs. Amy and Wuu-Shung Chuang
Dick and Pat* Holsworth
Nicholas R. and Sue Copeland
Jones
Eric* and Jane Nord
R. B. (Budd*) and Janet Kelsey Werner+

Silver (\$10,000 to \$24,999)

Mrs. William R. Anderson, Jr.
Fran and Roger Cooper

Dean and Susan Gibson
Ken Grossi and Sharon Sutherland
Maxine W. Houck
David and Eleanor Ignat
Ann* and Dayton Livingston
Emily and T.K. McClintock
Dan* and Marly Merrill
Maxwell G. and Muriel P.* Morgan
Patricia Murphy and Keith Koenning
Cathe Radabaugh
Ed and Ruth* Schwaegerle
Cindy and Eric Severs
John and Eugenia Poporad Vanek
Betty and Bob* Weinstock
Gail and Reid Wood+

Aluminum (\$5,000 to \$9,999)

Jane Blodgett
Ellen and Scott Broadwell
Ann and Norman* Craig
Don and Mary Anne Cunningham
Jim and Linda* Donovan
John and Margaret Erikson
Rich Fredrickson and Melanie Satterfield
Bethany and Jeff Hobbs
Karen P. and Terence G. Hobbs
Edward W. and Gail F. Hubbard+
Stephen and Mary Ann Johnson
W. Jeanne McKibben, MD+
Jane Ross Moore
Cindy and Evan* Nord
Pete and Prue Richards
Dina and Richard Schoonmaker
Bruce and Sue Simonson
Anne F.* and James K. Sunshine
Thomas Van Nortwick and
Mary Kirtz Van Nortwick
Anne W. and Edward J. Wardwell+
Catherine Wilber

Copper (\$2,000 to \$4,999)

Erik and Michele Andrews
Anonymous
David R. Ashenhurst
Barb and Joyce Benjamin
David* and Sigrid Boe
John Lott* and Katie Brown
Martin and Colette* Buck
Barbara Care
Marianne Cochrane
Dennis and Judy Cook
Mae Alice Donner
David and Susan Egloff
Barb and Craig Enos
Adam and Heidi Freas
Carl Gerber
Norma and Dick* Gilbert
Nancy J. Gray
Brian Hedges
Marjorie and Norman Henderson
Don* and Joy Illig
Carl W. Jacobson
Claudia W. and Robert K.* Jones
Jamie Jurado

Carol Lasser and Gary Kornblith
Bert Latran, Jr.
Bob and Carol Longsworth
Elisabeth M. Mahjoub
Amanda Manahan and Joe Cross
Suzanne O. McDougal
Anne Martin
Anthony J. Mealy
Cheryl Johnson Mees
David and Sandra Mellott
Julie Min and Gavin Tritt
Andrew and Pat* Missler
Thelma J. Morris
Kathleen and Richard Nord
Benjamin G. and Jane Norton
Kristin L. Peterson
Laurel and Rhys Price Jones
Eloise A. and Thomas R.* Pulsifer
Sharon Copeland Ramczyk
Donna and Kurt Russell
Elizabeth Schultz
Linda and Lowell Schultz
Cate and Paul* Schwaegerle
Julia S. Shaw
Donna M. and Thomas E. Shurr
Robert M. Singleton
Bud Spierling and Pauline Handman
Andrée and James Underwood
Don and Mary Louise VanDyke
Jeff and Merrilee Witmer
James H. Young+
Grover and Mary* Zinn

**** = Deceased*

THANK YOU TO THESE ELMs AND HERITAGE VISIONARIES WHOSE LEGACIES LIVE ON

*These individuals and couples are no longer
living, although their investment in the
Heritage Center continues to support the
ongoing work of the organization.*

*+ Marks Heritage Visionary / financial estate
gifts in addition to ELM status.*

Platinum (\$50,000 and above)

Ellen Adams
Evan Nord Trust+

Silver (\$10,000 to \$24,999)

David and Ricky Clark
Marge and Walt Edling
Ronald B. Gorman+
Mrs. Ernestine Evans King+
Oliver and Shirley J. Shubert+
Jean F. Wright+

Aluminum (\$5,000 to \$9,999)

Molly Anderson
Charlotte W. Bosch
Marianne Dickerman Caldwell
Bill and Leslie Farquhar
Carol H. Ganzel
Daniel and Elizabeth Goulding

Who's Who at the Oberlin Heritage Center in 2020

Douglas R. and Shirley R. Johnson
 Darlene Rae Krato
 Louise S. Richards
 David and Jean Schaal
 Martha Stacy
 Beth K. Stocker

Copper (\$2,000 to \$4,999)

Paul and Sally Arnold
 George and Mildred Arthrell
 Constance W. Boase
 Demaris and Jephtha Carrell
 Corning Chisholm
 Emiko Hara Custer
 Maynard and Sarah Davidson
 Mary Wright Fisk
 Helen V. Fitzhugh
 Alan and Nancy Gage
 Thomas and Nancy Gayters
 Mildred M. Haines
 Glenn and Lillian Hobbs
 Dorothy Holbrook
 Bill and Betty James
 Helen D. Johnson
 Mr. and Mrs. R. C. Ninde
 Joseph R. and Anita C. Reichard
 Judy and Warren Sheldon
 Robert H. Staples
 Nicholas Stevenson
 Nan B. Szwaja
 Katherine K. Tibbetts
 Etta Ruth Weigl
 James W. White
 Helen and Robert Woodward
 Keith R. and Victoria K. Young

Estate Gifts

Marguerite Ball
 Sara Carter Balogh
 Kurt Breunig
 Margaret Glider Papworth
 Jarvis A. Strong, Jr.

SUPPORTERS

The Oberlin Heritage Center is incredibly blessed and honored by our donors. You believe in our mission and our community, and there are no words to thank you enough.

M = Member of OHC
 AF = Annual Fund donor
 ELM = Endowed Life Member
 END = Endowment Donor
 HV = Heritage Visionary

1830 Hallauer House Bed & Breakfast,
 Joseph and Susan Woodward - M, AF
 19th Century Club - M
 Martin and Susan Ackermann - M, AF
 Mary Adams - M
 Adeva Salon and Spa - M
 Advance Auto Parts #6997 - M
 AgriNomix Inc. President, Robert Lando - M
 Camille Hamlin Allen - M, AF
 Amherst Historical Society - M
 Constance Anderson - M, AF

Mrs. William R. Anderson - M
 Geoffrey and Cynthia Andrews - END
 George and Marlene Andrews - M
 Erik and Michele Andrews - ELM, AF
 Sue Angell and Joe Delgado - M, AF
 Hank Annable - M, AF
 Judith Appleton - M, AF
 P. Lal Arora - M
 William G. Arthrell - M
 David R. Ashenurst - ELM, AF
 Walter Atwood - M
 Gary and Mary Aufdenkampe - M
 Anna and Philip Bak and Family - M
 Dorothy Baker - M
 Gini and Randy Barbato - M
 Bill and Inger Barlow - AF
 Dr. Nicole M. Barnett - M, AF
 William Barrow - M
 Suzanne Barsay - M
 Phyllis A. and Roland M. Baumann - M
 Elizabeth and Justin Bausch - M
 Jeanne R. Bay - M, AF
 Donna and Richard Baznik - M
 Ann Beach - M, AF
 Bead Paradise II, Silvija Aschaffenburg-
 Koschnick - M
 Mary Clare Beck - M
 Michelle Belanger - M
 Phyllis Bement - M
 Ben Franklin Store / MindFair Books, Krista
 Long - M, AF
 Barb and Joyce Benjamin - ELM
 Ruth S. Bent - M, AF
 John Berkmeier Painting LLC, John and
 Betty Berkmeier - M, AF
 Andrew and Jennifer Bertoni - M
 Barbara A. Bickel - M
 Jane and Ron Bier - M, AF
 Edie and Roger Binkley - M, AF
 Melanie Birchfield - M
 Rachael Blake - M, END
 Sharon W. Blecher - M, AF
 Jane T. Blodgett - ELM, AF, END
 George and Gerry* Blomgren - M, AF
 David W. Blood - M
 David* and Sigrid Boe - ELM, AF
 Janet E. Bolland - M
 Tania Boster - M
 Rita Bowen - M
 Jennifer Bowman - M, AF
 Dr. Phylcia Fauntleroy Bowman - M
 Tina Brandes - M
 David Breitman and Kathryn Stuart - M
 Janet A. Brent - M
 Howard and Jean* Broadwell - ELM, AF
 Ellen and Scott Broadwell - ELM, AF, END
 Broadwell Painting, Scott Broadwell - M, AF
 Sonia P. Brokaw - M
 Nathan and Kerri Broome - M, AF
 Barbara Brown - M, AF
 Constance Beckwith Brown - M
 Katie Brown - ELM
 Betsy Bruce - M
 Susan Bruening - M

Barbara J. Bruer - M, AF
 Richard W. Bryant - M, AF
 Martin Buck - ELM, AF, END
 Anita Buckmaster - M
 Marilyn Burns - M
 Susan Husted Burrows - M
 Business Advisory Services LLC, Shirley
 Hull - M, AF
 Catharina Meints Caldwell - M
 Robert B. Calhoun and Elizabeth L. Wilmer
 - ELM, AF
 -Deborah J. Carden - M
 Barbara B. Care - ELM
 Claudine and Terry Carlton - M, AF
 Carlyle Gift & Flower Shop,
 Francine Toss - M
 Mark J. Carnie - M, AF
 Kathleen A. Carothers - M, AF
 Rachel Carton - M
 Banu Casson - M, AF
 Angela Cecil - M
 Nancy and Richard Cecil - M
 Shirley Chambers - M
 Preston Chang-Sundin - M, AF
 Jane B. and Kenneth R. Cheek - M
 Tracy R. Chevalier - M
 Felicia Christian - M
 Amy and Wuu-Shung Chuang - ELM, AF
 Deborah Ciprus - M
 Jon D. and Sheryl H. Clark - M, AF
 George E. and Kathleen Clark - M
 John R. Clark and Kathleen Clark* - M
 Susan K. Clark - M, AF
 Ed and Marianne Clary - M
 James and Joan Cobb - M
 Marianne Cochrane - ELM
 Bruce R. Colbert - M
 John D. and Ronnie Cole - M, AF
 The Coleman/Mumford Family - M
 Joseph M. and Suzanne H. Colucci - M, AF
 Cynthia Comer and Michael Henle - M
 Sid Comings - M
 Judith M. Connolly and Kathy J. Reynolds
 - M, AF
 Anne and Rollin Conway - M, AF
 Charles T. Cook - M
 Dennis and Judy Cook - ELM, AF
 Julia Cooke - M
 Vera E. Cooke - M
 Fran and Roger Cooper - ELM, AF
 Bill and Emerson County - M
 Cowhaus Creamery - M
 Tim Cowling - M
 Cowling Funeral Home, Tad Cowling - M, AF
 Ann and Norman C.* Craig - ELM, AF
 Thomas L. Cramer - M, AF
 Judith and Robert Creasy - M, AF
 Lynn A. Crivello - M
 Rebecca Cross - M, AF
 Truman Crowell - M, AF
 Don and Mary Anne Cunningham - ELM,
 AF, END
 Marsha Darcy - M
 Joyce Daugherty - M, AF

Who's Who at the Oberlin Heritage Center in 2020

SUPPORTERS (continued)

M = Member of OHC
 AF = Annual Fund donor
 ELM = Endowed Life Member
 END = Endowment Donor
 HV = Heritage Visionary

Elizabeth and Martin H. David - M, AF
 Nancy L. Davis - M, AF
 Karolyn Dawley - M
 Sean Decatur and Renee Romano - M, AF
 Jan and Jerry DeMarinis - M
 Phyllis DeMark - M
 Ruby Denneen - M
 Emma K. Denny-Smith - M
 Andria Derstine - M
 Jack and Kathy DeRuyter - M, AF
 Ann DeVenny - M, AF
 Nicole DeWitt - M

Charles E. Dial - M, AF
 Dicken Funeral Home Inc., David Dicken - M
 Aimee Dickinson* and Tim Hornbeck - M
 Kay L. Diederick - M
 Albert C. Doane - M
 The Dobos Family - M
 Kaitlyn T. Donaldson - M, AF
 JoAnn Doerer - AF
 Mae Alice Donner - ELM, AF, END
 J. D. Donovan - ELM, AF
 Douds Veterinary Hospital, John Douds,
 DVM - M
 Lee C. Drickamer and Judith Sellers - M, AF
 Marion G. Drummond - M, AF
 Robert M. Dudash - M
 Louise and Richard Dunn - M, AF
 Griffith R. Dye - M
 Robert J. Eakin - M, AF, HV, END

Dr. Roy U. Ebihara - M, AF
 Lori Ebihara - M, AF
 Sheila J. Eckstein - M, AF
 EcoSphere Associates, Ricki C. Herdendorf,
 MAS - M
 Eden Valley Enterprises,
 Bette Lou Higgins - M
 Marge* and Walter* Edling - ELM, AF
 Lara Edwards - M
 David A. and Susan Egloff - ELM, AF
 Anne and John Elder - M
 Milton and Margaret-Ann Ellis - AF
 Matt and Elizabeth Elrod - M
 John Elrod - M
 Dale Embry - M, AF, END
 Emerge Inc., Ed and Nyree Skimin - M
 Ray English and Alison Ricker - M
 Mary Enos - M
 Barb and Craig Enos - ELM, AF

OHC Recognizes Extraordinary Legacy Gifts from Members

Last year, the Oberlin Heritage Center was honored to receive two extraordinary legacy gifts from Heritage Visionaries.

The first gift came from the estate of Shirley and Oliver Shubert, who were long-time supporters of OHC. Shirley served as a devoted trustee for years, and was active on the OHC Membership Committee. Oliver, who had been a student at Oberlin College, lived in what is now known as the Jewett House. His donation of the maroon and gold earmuffs he wore as an undergraduate help to furnish the recreated student room of that house.

The Shubert's gift was an unrestricted one, which allowed the OHC board the flexibility to dedicate the majority of the gift to long-term investment in



Old and new computers compared.

support of OHC's mission, as well as a portion to much-needed technology improvements. These upgrades included a change to the organization's network structure, moving email online for easier remote access, upgrading hardware for better security, and purchasing new computers and laptops. To acknowledge the Shubert's generosity, OHC affectionately named one of the new research computers "Oliver" and the new front-desk laptop "Shirley." OHC is touched to be a part of the Shubert's legacy!

At the end of year, near the holiday season, a generous contribution from the estate of R.B. "Budd" Werner was gifted to OHC's general endowment fund at the Community Foundation of Lorain County. Annual distributions

from this fund help pay for the ongoing operations of the organization, and are critical to keep the museum running. In a year in which businesses, nonprofits, and virtually everyone was hard-hit by the financial impacts of COVID-19, this gift was especially poignant. We are delighted that Janet Kelsey Werner, Budd's wife, was also able to show her support for OHC and share with staff members why both she and Budd chose to champion the ongoing work of the Oberlin Heritage Center. Thank you, both, for helping us continue to offer free programming (albeit virtually) and for providing funding to help keep historical records safe and protected. We are grateful for your generosity!



Oliver and Shirley Shubert 1990



R. Budd and Janet Kelsey Werner 2007

Who's Who at the Oberlin Heritage Center in 2020

John and Margaret Erikson - ELM
 Anna R. Ernst - M, AF, END
 Lynnette Eusden - AF
 Barbara and Gordon Evans - M, AF
 Aaron Fannin - M
 Marny Fannin - M
 Ann Farnsworth - M
 FAVA, Executive Director
 Kathleen Jackson - M
 Shelby Fickel - M, AF
 Ann and Gerry Findlan - M, AF
 David and Nancy Finke - M
 Gay A. Fischer - M
 Patricia L. and Richard M. Fishel - M, AF
 Carol and Daniel Fishwick - M, AF
 Stephen FitzGerald and Yumi Ijiri - M, AF
 Dennis and Sue Flood - M, AF
 Rick and Margie Flood - M
 Bob and Diane Follet - M
 David V. Foos - M, AF
 Lesley Forneris - M
 Bruce and Linda Fowler - M, AF
 Ann M. Francis - M, AF
 Arlene Franzen - M
 Pauline Freas - M
 Adam and Heidi Freas - ELM, AF
 Rich Fredrickson and
 Melanie Satterfield - ELM
 Tracey Frierson - M
 Barbara and William Fuchsman - M, AF
 Ann L. Fuller - M, AF
 Sharon Furrow - M
 Jennifer Gallagher - M
 Allison and Clare Gallaher - M
 Rebecca Ganzel Thompson and Micheal
 Thompson - M, AF
 Pedro L.* and Roberta E. Garcia - M
 Gardenscapes by Joanna LLC, Joanna
 Thomas - M
 James A. Garfield National Historic Site - M
 Nancy B. Garver - AF
 Linda C. Gates - M
 Suzanne M. Gay and
 James C. Dobbins - M, AF
 Carver Clark Gayton - M
 Carl R. Gerber - ELM, AF
 Laura Geller - M
 Brian and Kendra Gevry - M, AF
 H. Dean and Susan R. Gibson - ELM, AF
 Barbara and Donald Gilbert - M, END
 Norma B. Gilbert - ELM
 William Ginn - M
 Jack Glazier - M, AF
 Global Vocabulary LLC, Paulette Goll - M
 Marcia and Samuel Goldberg - M
 Ché S. and José M. González, Jr. - M
 Theodore R. Goodman - M
 Phyllis Gorfain and W. Bruce Richards - M
 Thomas W. Gorman - M
 Christina Graf - M
 Carol B. Graham - M, AF
 Nancy J. Gray - ELM, AF
 Catherine Grooms - M
 Ken Grossi and Sharon Sutherland - ELM,
 AF
 Mary Lynne Grove - M
 Constance and Michael Grube - M
 Grunwell-Cashero Co., General Manager
 Frank Caspio - M
 Denny Gulick - M
 Janet K. Haar - M
 J. Lynn Haessly and Andrew Young - M, AF
 Judy D. Hahn - M
 Mrs. Richard R. Hallock - ELM, AF, END
 Don Hall - M, AF
 Jim Hamilton - M
 Carrie R. Handy - M
 Robert W. Harmon - M
 Barbara M. Harper - M
 Larry A. and Nancy A. Harper - M, AF
 Carol Harvey - M
 Susan Edwards Harvith - M
 Harry Haskell - M, AF
 Olivia Hay - M
 Bradley and Nicole Hayes - M, AF
 Ruth S. Hayes - M
 Jack Heaton - M
 Carl and Marcia Heckert - M
 Brian D. Hedges - ELM, AF
 Jean M. Heller - M, AF
 Robert and Jean Hemminger - M
 Marjorie and Norman Henderson - ELM
 Beverly A. Hentges - M
 Herrick Jewelry, Malcolm and
 Mary Fowler - M
 Christa and James Hieb - M, AF
 Judi C. H. Hill - M, AF
 William F. Hilton - M, AF
 Matthew David Hintz - M
 Tom Hoadley and Cindy Lombardo - M
 Kevin H. Hobbs - M
 Bethany and Jeff Hobbs - ELM, AF, END
 Karen P. and Terence G. Hobbs - ELM, AF
 Clyde and Maryann Hohn - M
 Arthur Holbrook - M
 Allene C. Holliman - M
 Richard R. Holsworth - ELM, AF
 The Rich Holsworth Family - M
 Aimee* and Tim Hornbeck - M, END
 Pam Horvath - M
 Jerry and Karen Hottel - M, AF
 Maxine W. Houck - ELM, AF
 Stephanie C. Howe - M
 Catherine and Roberto Hoyle - M
 Edward W. and Gail F. Hubbard - ELM, AF,
 HV, END
 Linda Huber - M
 Alexia Hudson-Ward - M
 Doris E. Hughes-Moore - M
 Candyce Hughes - M
 Melany Hughes - M
 Richard Hughes - M
 Lewis Sheridan Hughes - M
 Carolyn L. Husted - M
 David and Eleanor Ignat - ELM
 Joylynn M. Illig - ELM, AF
 Jay Ingersoll - M
 Erik Inglis and Heather Galloway - M
 Kari F. Inglis - M
 Connie Ippolito - M, AF
 Sheila M. Ives - M
 James Jablonski - M
 Anne and Leonard Jacko - M
 Michael R. and Deborah D. Jackson - M, AF
 Patricia Jacobson - M, AF, END
 Carl W. Jacobson - ELM, AF, END
 Gary and Penny Jaffe - M
 Kathy and Mark Jaffee - M
 Inez James - M
 James A. Garfield National Historic Site - M
 Jan McKay & Associates - M
 Adelbert Jenkins - M, AF
 Gregory L. Jewett - M, AF
 Jewett Family of America, Inc. - M, AF
 Robin and William Jindra - M, AF
 Molly Johnson - M
 Eboni Johnson - M
 Stephen and Mary Ann Johnson - ELM, AF
 Nicholas R. and Susan C. Jones - ELM, AF
 Claudia W. and *Robert K. Jones - ELM, AF
 Ben Jones and Tanya Rosen-Jones - AF
 Helmut J. Jungschaffer and
 Lori A. Taylor - M, AF, END
 Ninita J. Jurado - ELM
 K-Konc Inc. (Midas Muffler),
 Keith Konnerth - M, AF
 Bill and Jody Kannen - M, AF
 David Kaplovitz - M, AF
 Marilyn and Robert Kasayka - M, AF
 Ondrea Keith - M
 Kendal at Oberlin,
 CEO Barbara W. Thomas - M, AF
 K. Austin Kerr - AF, END
 Nancy Kessler - M, END
 Nancy L. Kewish - M
 Sarah Khalil - M
 Dale Kiefer - M
 Jiyul Kim and Sheila Miyoshi Jager - M, AF
 Roderic Knight - M
 Anne G. Koenning - M, AF
 Audrey Y. Kolb - M, AF
 Gary Kornblith and Carol Lasser - ELM, AF
 Evan and Ilana Kresch - M
 Lorna and Richard Kretchmar - M, AF
 Lois S. Kroc - M
 Tim Krumreig - M
 Kuno Creative Group, Chris Knipper - M, AF
 Rhonda Kunselman - M
 Mari Kuroda and Michael Reynolds - M
 Kurt G. Sarringhaus Co., L.P.A., Kurt
 Sarringhaus - M, AF
 Bruce Laczko - M
 Adina Jocelyn Langer - M
 Bert L. Latran, Jr. - ELM, AF, END
 Laura B. Laubenthal - M
 Robin Lauren - M
 Richard and Sarah Laux - M
 Phyllis Lawson - M
 Megan Laycock - M
 Bruce and Nancy Layne - M

Who's Who at the Oberlin Heritage Center in 2020

SUPPORTERS (continued)

M = Member of OHC

AF = Annual Fund donor

ELM = Endowed Life Member

END = Endowment Donor

HV = Heritage Visionary

Leek Pipe Organ Company - M

Pam Lenz - M, AF

Diana K. Leonard - M, AF

Alexandra Letvin - M

Irwin Lewis - M

Linda D. Lewis - M, AF

Mrs. Patricia Lewis - M, AF

Xiaoqia Li - M

Jiann and Pearl Lin - M, AF

Lin-Barry Incorporated,

Barry and Linda* Jones - M

Fou Tanner Linder - M, HV

Katherine Linehan and

Glenn Loafmann - M, AF

Paul and Cindra Lipke-Benn - M

Ann* and Dayton Livingston - ELM, END

Anita and Tom Lock - M

Penny J. Locke - M

Locke's Go Green, Emil Ruth - M

Alan and Anne Lockwood - M

Oliver Loewy - AF

Megan and Sylvan Long - M, AF

Edward L. Long - M

Bob and Carol Longsworth - ELM, AF

Thomas Lopez and Holly Handman - M

Lorain County Community College, Cynthia

Kushner - M

Lorain County Historical Society, Director

Kerri Broome - M

Lorenzo's Pizzeria, Larry Cariglio - M, AF

Marian J. Lott - M

Nina Love - M

Louise Luckenbill* - M

Lupita's - M

Claudia Macdonald - M

Al and Ann MacKay - M, AF

Nancy MacRae - M

Elisabeth M. Mahjoub - ELM, AF

Barry and Sharon Manahan - M

Amanda K. Manahan and

Joseph L. Cross - ELM, AF

The Mandarin - M

Betsy and Michael Manderer - M

Mary A. Manning - M

Winifred D. Manning - M, AF

Manuel's Barber Shop,

Manuel J. Espinoza - M, AF

Amy Margaris - M

Anne V. Martin - ELM, AF

Courtney Martin - M, AF

Esmeralda Martinez-Tapia - M

Chris Mason and Laura Slocum - M

Delbert D. and Emma Jean Mason - M, AF

James D. Mason - M, AF

Jane A. Mathison - M, AF

Jean Marie Matthews - M

Nancy Matthews - M

Matus Winery, Bob Matus - M

The Mavrich Family - M

Sandra McClennen - M

Emily and T. K. McClintock- ELM, AF

Nancy McClusky - M

Joseph McCormick - M, AF

Vivian McCullough - M

Carl and Mary McDaniel - M

Marilyn K. McDonald - M

The McDonoughs - M

Suzanne O. McDougal - ELM

Mary H. McGill - M

McKay Lodge Fine Arts Conservation

Laboratory, Inc., Robert Lodge and Gina

McKay Lodge - M

Dean and Juanita McKee - M

Kevin McKee and Lauren Watkins - M, AF

Maren Ann McKee - M, AF

W. Jeanne McKibben - ELM, AF, HV, END

Steven J. McQuillin - M, AF

Meadowbrook Investment Advisors,

Dale Embry - M

Anthony J. Mealy - ELM, AF

Cheryl Johnson Mees - ELM, AF

Melanie B. Satterfield, DDS, Inc. - M, AF

David and Sandra Mellott - ELM, AF

John and Nicola Memmott - M

Mercy Health Allen Hospital, President

Charlotte Wray - M

Marlene D. Merrill - ELM, AF

Eugene L. Meyer - M

Laraine Meyers - M, AF

Sue E. Meyer - M, AF

Kelly D. Mezurek, Walsh University - M

Janet Michal - M

Beverly B. Miller - M, AF

Bill Miller and Ann Pilisy - M

Ruth Miller - M

Julie Min and Gavin Tritt - ELM, AF

Mary Minter and Michelle Minter - M

Sharon La Rocca Miranda - M

Andrew Missler - ELM

Jane Ross Moore - ELM, AF

Naomi Moore* - M

Maxwell G. Morgan - ELM, AF, END

Elizabeth C. Morris - M, AF

Thelma J. Morris - ELM, AF, END

Patricia Murphy and Keith Koenning - ELM,

AF, END

Ethel M. Muzilla - M, AF

National Business Brokers, Inc., Michael F.

Galbreath - M, AF

Brian and Judith Nedwek - M, AF

Mary C. Nelson - M, AF

Alexandra Nicome - M

Cindy Nord - ELM

Mrs. Jane B. Nord - ELM, AF

Kathleen and Richard Nord - ELM, AF

Nord Family Foundation Trustees - AF

Nordson Corporation President & CEO,

Sundaram Nagarajan - M

Don and Joanne Norenberg - AF

Benjamin G. and Jane Norton - ELM

Theodore Nowick and Robert Taylor - M, AF

OAAGHG - M

Noel Oakley - M, AF

Oberlin Bookstore - M

Oberlin Business Partnership - M

Oberlin Cable Co-op - M

Oberlin City Schools Superintendent,

David Hall - M

Oberlin College, President Carmen T.

Ambar - M

Oberlin College Archives, Archivist Ken

Grossi - M

Oberlin Early Childhood Center, Executive

Director Tricia Harrel - M

Oberlin Foot and Ankle, Amanda Meszaros,

DPM - M

Oberlin IGA, Leo Braido - M

Oberlin Lakeside Banquet Hall, Robin

Rudolf - M

The Oberlin Market, Elle Ramsey - M

Oberlin Public Library Director, Darren

McDonough - M

Elizabeth O'Connor - M

Karl Offen - M, AF

Ohio Educational Credit Union, Jocelyn

Miller - M

Old Way Farm & Market, Barney and Linda

Hartman - M

Gary Olin and Saranne Nelson-Olin - M, AF

Bob and Bonnie Oliphant - M, AF

David and Elaine Orr - AF

Mary Lee Orr - M, AF

Debra and Gregg Overmann - M

Therese Palmer - M

Susan Palmieri - M

Delores Pananen - M

Diantha Pare - M

Sandi Pasadyn* - M

Allan Patterson - M, AF

Wesley Patterson - M

Donna Pearson - M

Jeanne Pease* - M

Booker C. Peek - M, AF

Perales Law, Kathryn Perales - M

Laura Peskin - M

Harol and John Pesuit - M

Tom Peters - M

John E. Petersen and Nancy L. London -

M, AF

Kristin L. Peterson - ELM, AF

Corinne Petrie - M

Charles Phillips - M

Emily Acton Phillips - M

Mary Picken - M, AF

Barbara A. and Ronald A. Pierre - M

Kate Pilacky - M

Barbara Piscopo - M, AF

Bill and Patti Pitts - M, AF

Brenda Pitts - M, AF

Pittsfield Township Historical Society, Daniel

Clark - M

PlaceMakers Land Co., Ltd,

Todd C. Martz - M

Steven and Katherine Plank - M, AF

Laurence and Marjorie Porter - M

Who's Who at the Oberlin Heritage Center in 2020

Gail Powell - M, AF
 Dale and Kim Preston - M, AF
 Christina and Ronald Price - M
 Joe and Pat Price - M, AF
 Laurel G. and Rhys Price Jones - ELM, AF
 Mary Price - M
 Kelly Waite Prill - M
 Philip Pritchett - M
 Sarah A. Pryor - M, AF
 Eloise A. Pulsifer - ELM, AF
 Quality Tree Service - M
 Diane L. and Ray C. Radabaugh - M
 Cathe E. Radabaugh - ELM, AF, END
 WOBL & WDLW, Douglas B. Wilber - M
 Rafter A., Ltd., Rich Fredrickson,
 P.E., P.S. - M, AF
 Sharon Copeland Ramczyk - ELM, AF
 Ratsy's Vintage Store, Ratsy Kemp - M
 Jessie L. Reeder - M
 Karen and Peter Regas - AF
 Kathryn L. Reichard - M
 Barry and Carol Richard - M
 Pete and Prue Richards - ELM, AF
 Kay Rider - M
 Andy Ries - M
 Tom and Judy Riggle - M, AF
 Cathe Ritz - M
 Mary Eileen Romney - M
 Deborah Roose and David Snyder - M
 Gretchen B. Roose* - M
 Jerene and Paul* Rosa - M
 The Rosen-Jones Photography Studio,
 Tanya Rosen-Jones - M
 Beth Rosenquist - M
 Kathleen C. Ross - M, AF
 Ed Rowe - M, AF
 Mary Rowland - M
 Andy and Cindy Ruckman - M
 Elizabeth Rumics - M, AF
 Jerry V. Russell - M
 Retta L. Russell - M
 Donna and Kurt Russell - ELM
 Doug Rutherford - M
 Jacques Rutzky and Dyane Sherwood - M
 Kelly Boyer Sagert - M
 Linda G. Salisbury - M, AF
 John and Karla Sanderson - M
 Susan Sarhan - M
 Rev. Erica Saunders - M
 Jill B. Sawyer - M, AF
 Jean Schaefer* - M
 Jo-Ann Schmauch - M
 Judith A. and Richard G. Schmidt - M, AF
 Eugene Schmiel - M
 Dina and Richard Schoonmaker - ELM, AF
 Elizabeth Schultz - ELM, AF
 Linda and Lowell Schultz - ELM, AF
 Cate and Paul* Schwaegerle - ELM, AF
 Ed Schwaegerle - ELM, AF
 Sharon L. Schwenk - M, AF
 Joyce Scott - M
 Ruth E. Searles - M
 John G. and Kathleen A. Secrist - AF
 Cary Seidman - M
 Annalee Sekulic - M
 Jenny and John Sekulic - M
 Pat Serio and Bruce Ente - M, AF
 Cynthia and Eric R. Severs - ELM
 Drew H. Severs - M
 Severs & Clark Co., L.P.A., Eric Severs and
 Jon Clark - M, AF
 Robin Hoover Shaffer - M
 Jean L. Shannon - M, AF
 Elayne Shapiro - AF
 Julia S. Shaw - ELM
 Judy Sheldon* - ELM
 Brittni Sherrod - M, AF
 Gayle Sherry - M
 A. V. Shirk - M, AF
 Louise D. Shoemaker - M
 Thomas E. Shoup - M
 Showalter's Chimney Service Tom
 Showalter - M, AF
 Shirley J. Shubert* - ELM, END, HV
 Donna M. and Thomas E. Shurr - ELM, AF
 Shurtleff Cottage Bed & Breakfast, Marsha
 Marsh - M
 Lawrence B. Siddall - AF
 Karin J. Siddall-Hupala - M
 Bill and Sandy Siebenschuh - AF
 Maureen T. Simen - M, AF, END
 Ms. Eugene Foggo Simon - M, AF
 Mary F. Simons - AF
 Bruce and Sue Simonson - ELM, AF
 Simonson Clock Shop, Tim Simonson - M
 Robert M. Singleton - ELM, AF, END
 Beatrice A. Skeens - M
 Sliman's Chrysler Dodge Jeep Ram, Paul
 Sliman - M
 Ken Sloane - M
 Harold and Linda Slocum - M, AF
 Barb Smith - M, AF
 Chris Smith - M
 Chris and Randy Smith - M, AF
 Irene S. Smith - M
 Karen A. and Michael L. Smith - M
 Nichol and Melissa Smith-Hignite - M, AF
 Nancy G. Snyder - M, AF
 Steven and Cheryl Souders - M, AF
 Southern Lorain County Historical
 Society - M
 Ruth E. Spencer - M
 Sherry Spenser - M
 Sperry-Gorske Agency, Inc. - M
 Paul R. Spierling and Pauline Handman -
 ELM, AF
 Dr. Arthur W. Sprague - M, AF
 Delbert Spurlock - AF, END
 Sarah Andrews Stafford - M
 Katherine Diane Stanley - M
 Ken Stanley and Marta Laskowski - M, AF
 Bennie Stanton and
 Kimberly Thompson - M, AF
 June and Randy Starcher, and Wallace
 Starcher - M
 Margaret C. Stark - M, AF
 Daniel Steinberg - M
 Priscilla Steinberg - M, AF
 Mark R. Stewart - M
 Marilyn Stock - M, AF
 Straight's Sharpening Service, Lloyd and
 David Straight - M
 Subway of Oberlin, Jeff Linden - M
 James K. Sunshine - ELM, AF
 Sustainable Community Associates, Ltd.,
 Josh Rosen, Ben Ezinga, Naomi Sabel - M
 Sherry Ann Suttles - M
 Hank Swager and
 Jillian McFarland Swager - M
 Erin Swenson-Klatt - M, AF
 Salvatore Talarico - M
 Lillie Faye Taylor - M
 Shirley Taylor - M
 Thomas William Taylor - M
 Eileen K. Telegdy - M, AF
 The Breunig Law Firm Co. LPA, Erik A.
 Breunig - M
 The First Church in Oberlin, U.C.C. - M
 The Hotel at Oberlin, Erica Todhunter - M
 Heidi Thomann Tewarson - M
 Harriett A. Thomas - M
 Riley Thomas - M
 Janis and Robert Thompson - M
 Philip Thornton - M
 Naomi and Willis Todd - M
 Jerry and Melva Tolbert - M, AF
 Grace M. Tompos - M
 Francine Toss - M, AF
 Kathy Toth-Smith - M, AF
 Emily V. Troiano - M, AF
 Bill and Mary Ann Trost - M
 Carol S. Tufts - M, AF
 Turnbull Plumbing & Heating, LLC, Glenn
 and Robin Turnbull - M
 Turnbull Trucking & Excavating, Claud
 Turnbull - M
 Andree and James Underwood - ELM, AF
 Janet B. Van Doren - M, AF
 Thomas and Mary Kirtz Van Nortwick - ELM,
 AF
 Vandemark Jewelers, Jim Vandemark - M
 Don and Mary Louise VanDyke - ELM, AF
 John A. and Eugenia Poporad Vanek - ELM,
 AF, END
 Cynthia R. Verda - M
 Vermilion Valley Vineyards - M
 Mrs. Stephanie Vetrone - M, AF
 Visit Lorain County, Jen Kennedy - M
 Dinah and Steve Volk - M, AF
 Diane Vreuls and Stuart Friebert* - M, AF
 Marilyn Wainio - M, AF
 Mollie Wallace - AF
 Robin Root Wallace - M
 James Leo and Katherine H. Walsh - M, AF
 Margie G. Walter - M, AF
 Dorra B. Ward - M, AF
 Anne W. and Edward J. Wardwell - ELM,
 AF, HV
 Chuck and Laurene Warfield - M, AF, END
 Andrew Laurence Watiker - M, AF
 Carol Ann Watkins - M, AF
 Maryann Hanak Watson - M, AF

Who's Who at the Oberlin Heritage Center in 2020

Watson Hardware, Jerry Anderson - M, AF
 Eva and Tom Weber - M, AF
 Kevin and Susan Weidenbaum - M, AF
 Elizabeth B. Weinstock - ELM, AF
 Welcome Nursing Home, Jill Herron - M
 Janet Kelsey Werner - ELM, END
 Western Reserve Land Conservancy,
 Firelands Office, Andy McDowell - M
 Jill and Vern Wettersten - M
 Jerry White - M
 Catherine A. Wilber - ELM
 Brian Wilbert and Yorki Encalada - M, AF
 Andrew Wilburn - M
 Mrs. Martha Wilkins - M, AF
 Beulah Williams - M
 Linda I. Williams - M
 Patricia Williams - AF, END
 Robert O. Williams - M, AF
 Amy Winnicki - M
 Ben Wisner and Sonia Kruks - M, AF
 Jeff and Merrilee Witmer - ELM
 Steven Wojtal and Wendy Kozol - M
 Peter H. Wood - M
 Thomas E. Wood - M
 Gail and Reid Wood - ELM, AF, HV
 Wood Shed Lesson Studio, Kevin Jones - M
 Amelia Woodward - M, AF
 Helen Woodward - ELM*
 Charles Worcester - M
 Mary K. Worthington and
 Tom Hinders- M, AF
 Dr. and Mrs. Thomas T.K. Wu - M
 Annessa Wyman - M
 James H. Young - ELM, HV
 Larry and Sue Young - M, AF
 Lynn M. Youngblood - M
 Grover A. Zinn, Jr. - ELM, AF
 James E. and Janice C. Zinser - M, AF
 May P. Zitani - AF

* Deceased

National Trust for Historic Preservation
 National Underground Railroad Network to
 Freedom
 Northeast Ohio Intermuseum Council
 Northwest Bank
 Oberlin African-American Genealogy and
 History Group (OAGHG)
 Oberlin Business Partnership
 Oberlin Cable Co-op
 Oberlin Center for the Arts
 Oberlin City Schools
 Oberlin College Bonner Center for
 Community-Engaged Learning, Teaching,
 and Research
 Oberlin College Environmental Studies
 Department
 Oberlin College History Department
 Oberlin College Libraries, Archives, and
 Special Collections
 Oberlin Community Calendar/Environmental
 Dashboard
 Oberlin Fire Department
 Oberlin Municipal Light and Power System
 Oberlin People Together
 Oberlin Police Department
 Oberlin Post Office
 Oberlin Public Library
 Ohio Association of Nonprofit Organizations
 Ohio History Connection
 Ohio Humanities
 Ohio Local History Alliance
 Piatt Castle (Margaret Piatt)
 Quality Tree Service
 Ric Sheffield
The Senior Years (LCOOA)
 StoryLens
 Tech Soup Global
 The Sutliff Museum (Melissa Karman)
 Time Travelers Network
 Verité Stained Glass

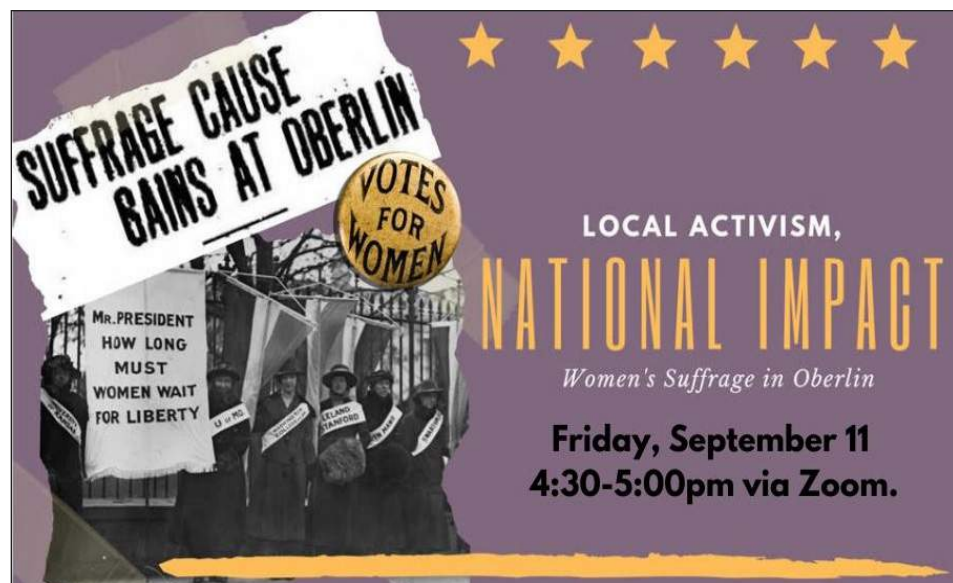
Western Reserve Land Conservancy,
 Firelands Office
 WEOL
 WOBC
 WOBL/WDLW

DONATIONS OF SUPPLIES, ARTIFACTS AND MISCELLANEOUS

Zaria Amerson and Family
 Erik and Michele Andrews
 Kathy Caldwell
 Amy and Wuu-Shung Chuang
 Don and Mary Anne Cunningham
 Mary Behm
 Pam and Keith DeLong
 William and Suzanne Denneen
 Roy and Aiko Ebihara
 Elizabeth Elrod
 Barb and Craig Enos
 Karen P. And Terence G. Hobbs
 Edward W. and Gail F. Hubbard
 William and Bonnie Hubbard
 Stephen and Mary Ann Johnson
 Kaitlyn Lucey
 Devyn Malouf
 Kate Pilacky
 Northwest Bank - Oberlin Office/Mari Pravlik
 Oberlin College Archives (Ken Grossi)
 Jeanne Pease*
 Kristin Peterson
 Marcia Peterson
 Rita Ramsey
 Karen Schrader
 Judith A. and Richard G. Schmidt
 Pat Serio
 James Siddall
 Patricia Williams
 Mary Worthington

BUSINESS, ORGANIZATIONS, AND OTHERS WHO ASSISTED OR COLLABORATED WITH THE OBERLIN HERITAGE CENTER

Allen Memorial Art Museum
 City of Oberlin
*The Chronicle Telegram/Lorain County
 Community Guide*
 Coalition for Oberlin History
 EcoSphere Associates
 Friends of Westwood Cemetery
 Kelton House Museum & Garden
 (Sarah Richardt)
 Kendalight
 Bert Latran, Jr. - Arborist
 Leadership Lorain County
 Lorain Historical Society
 Lorain County Historical Society
 Lorain County Public Health Department
The Morning Journal
 National Endowment for the Arts/Blue Star
 Museums Program



Shutting down didn't mean OHC was shut down - in fact, our programming continued with virtual options and remote learning opportunities throughout the year.

Who's Who at the Oberlin Heritage Center in 2020

Grants and Special Project Support

City of Oberlin / Sustainable Reserve Fund
Pollinator garden

Community Foundation of Lorain County – The Jane and Eric Nord Fund
General operating support

Community Foundation of Lorain County – Lakeland Fund
Equipment and software support and upgrades

Edward W. and Gail F. Hubbard
Hubbard History Day Prize

David and Eleanor Ignat
Special projects and general operating support

Nancy Kessler
Jewett House preservation

Linda Lewis
Research project

The Nord Family Foundation
Monroe House foundation coating

Nordson Corporation
Educational programs support

Ohio Business Partnership/City of Oberlin/Bed Tax Grant
Promotional materials and social media advertising

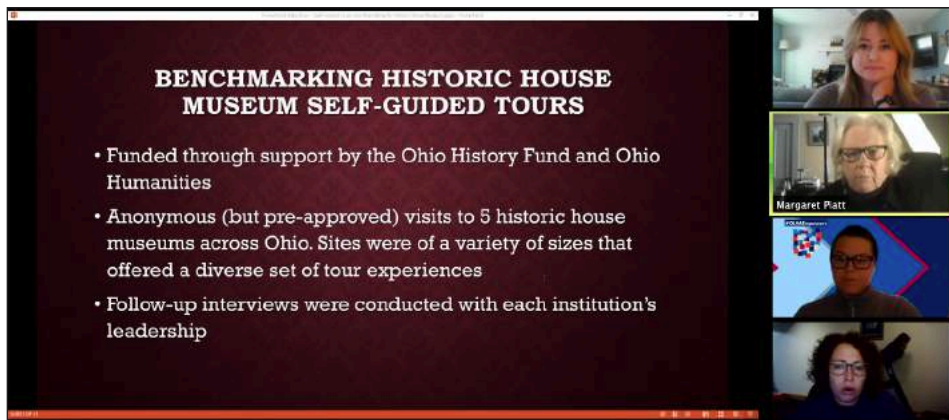
Ohio History Fund / Ohio History Connection
Self-guided tours benchmarking project
COVID-19 emergency grant

Ohio Humanities
Self-guided tours benchmarking project
Oberlin-Wellington Rescue documentary

Paycheck Protection Program / SBA
COVID-19 personnel support

Tom and Mary Kirtz Van Nortwick
Children's programming

Ed and Anne Wardwell
Collections Manager support



Museum Education and Tour Coordinator Amanda Manahan gathered professional peers to host a panel about self-guided tour options during the Ohio Local History Alliance annual meeting.



Oberlin College students visited in March 2020 (pre-shutdown) for a discussion about OHC's oral history program and some fun at the Little Red Schoolhouse.

MATCHING GIFTS SPONSORS

Benevity
IBM Corporation
Matching Grants Program
The Nord Family Foundation



Krista Long, owner of Ben Franklin/Mindfair Books, helped lead her team to victory during the annual November Trivia Night. Even the Zoom format couldn't stop these Trivia all-stars from re-claiming their first-place title.

Who's Who at the Oberlin Heritage Center in 2020

OHC RECOGNIZES THOSE DONORS WHO MADE GIFTS IN MEMORY OF DEARLY DEPARTED LOVED ONES AND FRIENDS, OR TO HONOR THE LIVING.

In Memory of:

Marjorie "Midge" Brittingham – gift made by Father Brian Wilbert and Yorki Encalada

Dave and Ricky Clark – gift made by Jon D. and Sheryl H. Clark

Aimee T. Dickinson - gift made by Tim Hornbeck

Arba and Mildred Fowls – gift made by Judith A. and Richard G. Schmidt

Carol Ganzel – gift made by Rebecca Ganzel Thompson

Harold and Martha Gibson – gift made by H. Dean and Susan R. Gibson

Robert and Nancy Hamlin – gift made by Camille Hamlin Allen

Patricia Holsworth – gift made by Richard R. Holsworth

Robert K. Jones – gift made by Don and Mary Anne Cunningham

Karyl Lee – gift made by Gail Powell

Donald E. Lewis – gift made by Mrs. Patricia C. Lewis

Verba L. Lewis – gift made by Linda D. Lewis

Ann Livingston – gifts made by Dayton Livingston; Martin and Susan Ackerman; Claudine and Terry Carlton; Don and Mary Anne Cunningham; Jo Ann Doerer; Frederick R. and Ann M. Entwistle; Lynnette Eusden; Barbara and Donald Gilbert; Nancy J. Gray; Oliver Loewy; Linda Maydak; Pete and Prue Richards; Andy and Cindy Ruckman; Elizabeth Schultz; Bill and Mary Ann Smyers; Mollie Wallace; James Leo and Katherine H. Walsh; Dr. Ann K. Wentworth; and James E. and Janice C. Zinser

Hans Petersen – gift made by Carol and Daniel Fishwick

Shirley Shubert – gifts made by Don and Mary Anne Cunningham; J.D. Donovan; Jerry and Karen Hottel; and Linda D. Lewis

Dorothy M. Smith – gift made by Anonymous

Elizabeth Duval Spurlock – gift made by Delbert L. Spurlock

Jim White – gift made by Maxine W. Houck

Alan Wilkins - gift made by Mrs. Martha J. Wilkins

Charles R. Williams and Jessie M. Peabody Williams – gift made by Robert O. Williams

Shirley C. Williams – gift made by Linda I. Williams

In Honor of:

Roland Baumann – gift made by Harry Haskell

Bob Bosau – gift made by Conleth Crotser and Peter Crowley

Edward W. Hubbard – gifts made by Nancy Kessler and Jeffrey and Susan Chesire

Charles and Ernestine King – gift made by Nancy L. Davis

Bert Latran, Jr. – gift made by Mary Picken

Dayton and Ann Livingston – gift made by Mark Carnie

Julie Min – gift made by Jane Mathison

Pat Murphy – gift made by Anne G. Koenning

Annette E. Peek – gift made by Booker C. Peek

Dale Preston – gift made by Julie Min and Gavin Tritt

Dina and Dick Schoonmaker – gift made by Michael and Viola Bikerman

Burrell Scott – gift made by Delbert L. Spurlock, Jr.

Elizabeth Schultz – gift made by Fran and Roger Cooper

Don and Mary Louise VanDyke – gift made by Father Brian Wilbert and Yorki Encalada

Gail and Reid Wood – gift made by Barb and Craig Enos

Buy-A-Brick Fundraiser

If you walk through the Oberlin Heritage Center's campus, you will see many memories engraved in the bricks lining our walkways! OHC works closely with Midwest Engraving of Wadsworth, Ohio to inscribe memorial bricks with meaningful sentiments. Proceeds from the brick sales help support grounds maintenance and other landscaping projects. Visit www.oberlinheritagecenter.org for additional information and to order your bricks today. New bricks are installed annually in the summer. Bricks ordered in 2021 will be included in next year's annual report.

THE HUBBARDS

Jeffrey and Susan Chesire

IN HONOR OF JANE BLODGETT

Sally Olson

VERA COOKE/FRIEND/INSPIRATION

Kathryn Reichard

MISS MERTHE/LATIN/FRENCH

Kathryn Reichard

JAKIE ROSA/DAUGHTER

Three Eagle Cloud

DAVE ROSA/SON

Three Eagle Cloud

HECTOR L ROSA/SON

Three Eagle Cloud



Liz Schultz, Steve Johnson, and Malaya Nordyke distanced themselves as Steve stopped in to record narration for a mini documentary about the history of Wright Park in Oberlin. Malaya and her teammates from StoryLens Pictures did a wonderful job editing.



Leadership Lorain County students took part in OHC's landmark scavenger hunt.



OHC staff and volunteers took a break to play to bocce and wiffle ball before the snow hit.

2020 By the Numbers!

At the end of 2020, OHC had:

Shared history with over **1,457** program and event participants, largely by Zoom or other online media to keep our supporters safe.

Answered **98** research and information requests from museum members and other friends.

Given tours to more than **656** people, virtually and in person!

Shared history with **2,185** Facebook and Instagram followers.

Added new content to our YouTube channel.

Recorded **553** views from new watchers.

Accessioned **43** items and records into the permanent collection, **11** of which were a part of the Covid-19 collecting initiative.

Collected **48** new oral COVID histories!

Partnered with more than **20** community organizations to offer specialized programs and services.

Provided online information to local schools and other groups in more than **19,669** website sessions.



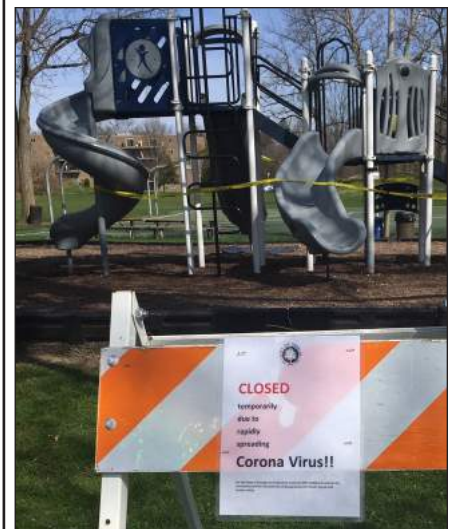
73½ South Professor Street
 MPO Box 0455
 Oberlin, OH 44074-0455
 (440) 774-1700
www.oberlinheritagecenter.org

Around Town in 2020

OHC is continually documenting Oberlin events and experiences to help educate current and future generations. Please consider adding your memories to our collections!



Local businesses like Ben Franklin/Mindfair Books and Ratsy's helped combat the coronavirus and lifted everyone's spirits. (Photos donated by Elizabeth Elrod and Suzanne Denneen)



Early shutdowns of gathering places like playgrounds “flattened the curve” and bought hospitals and residents time to prepare.



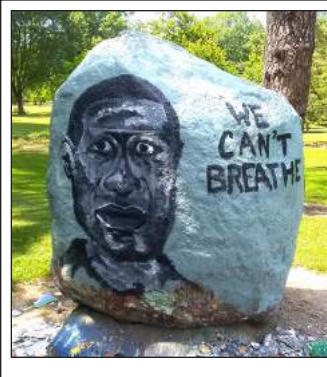
Community members appreciated IGA and all frontline workers.



Oberlin schools had a teacher and staff parade in May to demonstrate their love for their students. (Pictured: Kristi Walter)



Oberlin community members and students protested violent and systemic racism in several local events.



Unknown artists painted George Floyd and “We Can’t Breathe” on a boulder in Tappan Square.



Gen. Giles Shurtleff demonstrated proper mask use.